

Implementing the EU Methane Regulation in Romania

A practical guide for public authorities

Raffaele Piria (Ecologic Institute)

Ramiro de la Vega (Ecologic Institute)

Corina Murafa (Bucharest University of Economic Studies)

May 2025

Contact

Raffaele Piria
Senior Fellow
Ecologic Institute
Pfalzburger Straße 43/44
10717 Berlin
E-Mail: Raffaele.Piria@ecologic.eu

Suggested citation

Piria, Raffaele, Ramiro de la Vega, Corina Murafa (2025): Implementing the EU Methane Regulation in Romania. Ecologic Institute, Berlin. Available at: <https://www.ecologic.eu/20099>

The original paper published in English will soon be translated into Romanian.

Acknowledgements

The authors would like to thank Cristian Busu (ASE), Veronika Murzynova and Aleš Jeník (CDE), Alba Lorente (EDF) and Elisabeth Lemaitre (EDF), for their support, intellectual contribution and inspiration.

This paper has been product within the project “I-MER - Implementing the EU Methane Emission Regulation”, with the support of the [European Climate Initiative \(EUKI\)](#) launched in 2017 by the German Federal Ministry for Economic Affairs and Climate Action (BMWK).

Supported by:



on the basis of a decision
by the German Bundestag

Ecologic Institute: Science and policy for a sustainable world

Ecologic Institute is an independent, academic think tank for environmental research and policy analysis. Since our founding in 1995, Ecologic Institute has been dedicated to improving environmental policy, sustainable development and policy practice. Through findings and ideas Ecologic Institute helps to mainstream environmental issues into other policy areas. Strengthening the European and international dimensions in research, education and environmental policy discourses is a key priority. Ecologic Institute has offices in Berlin, Brussels and [Washington DC](#).

Today more than 100 employees work for Ecologic Institute. Our colleagues come from over 25 countries. Offering diverse expertise and skills, our experts cover the entire spectrum of environmental policy, sustainable development and socio-ecological research in inter- and transdisciplinary projects. Our staff researches, supports and evaluates national, European and international political processes and brings together actors from science, politics and practice. The results are in-depth analyses and practical recommendations. In cooperation with leading American and German universities, the Institute is also active in education.

Ecologic Institute is a private, non-profit institution financed through its project work. Funding partners include the [European Commission](#), the [European Parliament](#), the [German Federal Ministry for the Environment](#), the [German Federal Ministry of Education and Research](#), the [German Federal Environment Agency](#) and various foundations.

Ecologic Institute is a member of the [Ecological Research Network](#) (Ecornet).

Ecologic Institute is a registered charity. Donations are tax deductible.

[Ecologic Institute in Washington DC](#) is an IRC 501 (c) (3) non-profit organization.

Further information: www.ecologic.eu

Contents

Introduction.....	1
Structure of this report	1
Further activities envisaged within the same project	1
Key sources used in this report, and their citation format.....	2
1 Short overview on the EU-MER.....	3
Overwhelming majorities provide high democratic legitimization	3
Why was the EU-MER adopted with such large majorities?.....	3
The EU-MER applies to.....	3
The main provisions of the EU-MER in a nutshell	4
Overview of actors involved in the EU-MER implementation	5
Key milestones for national implementation in 2025-2027	5
2 Responsible ministry and competent authorities.....	8
Principles of governance in the EU-MER implementation	10
3 Sources of CH₄ emission from energy sector in Romania	13
Methane emissions from the energy sector in Romania.....	13
Overview of the CH ₄ emission sources to be monitored by the Romanian authorities ..	14
4 Monitoring, supporting and enforcing implementation	17
CAs to evaluate technical reports submitted by regulated entities	17
CAs to take enforcement decisions.....	18
Outgoing reports and publications to be produced by the CA	18
Cooperation at the EU level and with third countries	18
Dealing with complaints.....	19
Laying down the penalty regime.....	19
Certification, accreditation schemes or equivalent qualification schemes.....	21
5 Inspections.....	22
Rationale and overall principles	22
Inspection requirements and procedures under the EU-MER	22
Timeline	23
Implementing steps	23
Implementing inspections in Romania	24
6 Inventories & mitigation in disused extraction sites.....	25
Rationale and overall principles	25
Areas of application and definition of responsibilities	25



Criteria the inventory must fulfil	26
Information sources for the inventories in Romania.....	27
Identifying the entities responsible for mitigation and reporting.....	27
Detailed provisions on reporting, mitigation plans and mitigation measures.....	28
Timeline	29
7 Adequate powers and resources for the CAs	31
Types of skills and resources needed	32
How to keep the implementation costs at bay.....	33
How to quantify the resources needed to implement the EU-MER in Romania	34
Annex 1 - Incoming reports to be evaluated by the CA	36
Annex 2 – Decisions to be taken by the CA	39
Annex 3 – List of reports and publications to be produced by the CAs	41
References	42

Abbreviations

ANPM	National Environmental Protection Agency
ANRE	National Energy Regulatory Authority
ANRM	National Agency for Mineral Resources
ANRMPSG	Romanian National Authority for Regulation in the Mining, Petroleum, and Geological Carbon Dioxide Storage Sectors
AUCM	Abandoned underground coal mine
CA	Competent authority
CH₄	Methane
CRV	Core Reference Value
CSOs	Civil society organisations
CUCM	Closed underground coal mine
EUKI	European Climate Initiative
EU-MER	EU Methan Emissions Regulation
GNM	National Environmental Guard
IMEO	International Methane Emissions Observatory
IPAW	Inactive, temporarily or permanently plugged and abandoned oil and gas wells
LDAR	Leak detection and repair
LNG	Liquefied natural gas
ME	Romanian Ministry for Energy
MEDAT	Ministry of Economy, Digitalisation, Entrepreneurship, and Tourism
MF	Ministry of Finance
MMAF	Romanian Ministry of Environment, Water and Forests
MRV	Monitoring, reporting and verification
MS	EU Member States
OGMP	Oil and Gas Methane Partnership
RENAR	Romanian Accreditation Association
RP	Responsible Party
RM	Responsible Ministries
V&F	Venting and flaring

Indexes

List of Figures

Figure 1: EU-MER implementation: key actors and actions	5
Figure 2: Timeline of selected incoming reports to be evaluated by the CA	17
Figure 3: Criteria for the level of penalties	20
Figure 4: Core Reference Value (CRV) and other criteria to determine fine levels	20
Figure 5: Inspection timeline for active and disused sites	23
Figure 6: Timeline for inventories and mitigation plans for closed and abandoned assets.....	30

List of Tables

Table 1: Selected deadlines for implementation in Romania until early 2027	6
Table 2: Overview of EU-MER tasks assigned to the ME and to the Romanian CAs.....	8

Introduction

This report aims to support Romanian public authorities in implementing EU Regulation 2024/1787 on methane (CH₄) emissions in the energy sector (EU-MER). It also provides valuable information for companies affected by the Regulation and civil society organisations engaged in its implementation.

The impact of the EU-MER will depend on the quality of its implementation. Although EU regulations such as the EU-MER are directly applicable across all EU Member States, the EU-MER's implementation depends on substantial executive measures as well as some supplementary regulatory provisions at the national level. This report provides information and practical support to help the Romanian government and encourage the teams at the soon-to-be established competent authorities (CA) to implement the EU-MER effectively, thoroughly, timely and efficiently.

Structure of this report

Chapter 1 provides a concise overview of the key provisions of the EU-MER, outlining the responsibilities assigned to the European Commission, Member States (MS) and operators, with a focus on milestones leading up to 2026.

Chapter 2 offers a detailed discussion on the division of work and governance principles at the national level and examines what is currently known about the definition of the responsible ministry (RM) and of the competent authorities (CAs) in Romania.

Chapter 3 outlines the sources of CH₄ emissions from the energy sector in Romania.

Chapter 4 details the key duties of the RM and CAs in supporting, monitoring, and enforcing the EU-MER implementation, excluding the main tasks discussed in the two following chapters.

Chapter 5 details the tasks related to establishing national inventories of disused fossil fuel extraction sites and planning and implementing CH₄ mitigation measures at these sites.

Chapter 6 addresses the inspections of operators of domestic CH₄-emitting sites and importers.

Building on the previous analysis, Chapter 7 examines the resources and powers needed by the CAs to fulfil their EU-MER implementation duties in Romania, along with strategies aimed at keeping the implementation costs at bay.

The three annexes provide detailed lists of incoming reports to be evaluated, decisions to be made, and reports and publications to be produced by the Romanian CAs.

Further activities envisaged within the same project

This report was developed under the project *Implementing the EU Methane Emission Regulation: Engaging Authorities, Civil Society, and Businesses*, supported by the European Climate Initiative (EUKI) – a programme funded by the German Federal Ministry for Economic Affairs and Climate Action, based on a decision of the German Bundestag. The project, coordinated by the Bucharest University of Economic Studies in collaboration with Centre for Transport and Energy, Ecologic Institute, and Environmental Defense Fund Europe, started in December 2024 and will run until the end of 2026.

This report is published at the outset of the EU-MER's implementation. Accordingly, it primarily offers an overview of key issues related to its future implementation in Romania. As the EU-

MER implementation process progresses, two additional reports are planned to assess implementation developments and reflect on the steps taken.

Moreover, the project will actively support public authorities, civil society organisations (CSOs) and businesses by developing and implementing a series of targeted activities:

- Capacity building and training: the project will provide information and support for organising workshops and training sessions for representatives of public authorities, companies and civil society organisations in the energy sector. These sessions will cover key aspects of EU-MER requirements, effective methane emissions reduction methods, and the use of advanced technologies for monitoring and reporting.
- Facilitating stakeholder dialogue: the project will organise discussions and meetings between public authorities, the private sector and non-governmental organisations to ensure effective collaboration and information exchange on EU-MER implementation.
- Piloting and data collection: pilot projects will be conducted to test innovative technologies for measuring and reducing methane emissions, and the data collected will contribute to improving national policies in this area.
- Monitoring and policy recommendations: the project will provide data-driven analysis and recommendations to support national authorities in aligning regulations and methane reduction measures with EU requirements.
- An economic analysis of the costs and benefits of reducing methane emissions in the energy sector in Romania.
- Investor briefings and engagements on implementing the EU-MER in Romania.

Through these initiatives, the project aims to accelerate the reduction of methane emissions and to create an effective collaborative framework between all actors involved.

Key sources used in this report, and their citation format

The primary source of this report is the legal text of the EU-MER. It is accessible in all official languages of the European Union via the [relative page on the EUR-LEX database](#). When quoting the legal text of the EU-MER, we use the following format. The EU-MER “*lays down rules for the accurate measurement, quantification, monitoring, reporting and verification of methane emissions in the energy sector in the Union, as well as the reduction of those emissions (...)*.” [Art 1(1)]. This indicates that the citation is taken from Article 1, paragraph 1 of the EU-MER, with part of the paragraph omitted.

Furthermore, this report draws extensively on a series of three Working Papers on the EU Methane Regulation published by Ecologic Institute in June 2024.

- [Tasks and resources needed at the national level](#) (Piria, de la Vega, and Velten 2024)
- [Governance at the national level: Responsible ministries and competent authorities](#) (Piria and Martini 2024)
- [Penalties and selected legal issues](#) (Piria, Sina, and Dück 2024)

As the principal author of those papers is also the lead author of this report, and with the consent of the co-authors, we have not provided explicit citations, even where wording, phrases or entire paragraphs have been replicated, in order to enhance readability.

When quoting other sources, in some cases we provide a hyperlink to the original publication as in this section. As a result, this report is best read on screen than in print.

1 Short overview on the EU-MER

Regulation (EU) 2024/1787 on methane emissions in the energy sector (EU-MER) has been adopted by large majorities in both legislative bodies of the European Union.

Overwhelming majorities provide high democratic legitimization

In the European Parliament, the EU-MER was approved in plenary on 10 April 2024, with 530 votes (85%) in favour, 63 (10%) against and 28 (5%) abstentions. Among the 33 Members of the European Parliament elected in Romania, 16 (48%) voted in favour, one abstained, none voted against, and 16 did not participate (EP 2024). In the European Council, 26 of the 27 Member States voted in favour, with only Hungary opposing.

These overwhelming majorities reflect a strong consensus and confer a high level of democratic legitimacy on the EU-MER, both at the EU level and specifically in Romania.

Why was the EU-MER adopted with such large majorities?

Because it was an obvious choice. Methane (CH₄) is the second most important greenhouse gas. Anthropogenic methane is responsible for approximately 30% of global warming since the Industrial Revolution (IEA 2024a). CH₄ has an exceptionally strong short-term warming effect. Over a 100-year period, its global warming potential (GWP) is about 30 times that of CO₂, but over 20 years, it is 84 times higher. The short lifetime and high warming impact of methane make rapid action on this climate-warming gas crucial. Rapidly cutting methane emissions from fossil fuel operations could avoid up to 0.1°C of warming by mid-century (IEA 2023b)

For these reasons, in 2021, the EU, together with the USA, co-initiated the [Global Methane Pledge](#), a commitment to reducing global CH₄ emissions by at least 30% between 2020 and 2030. Since then, 160 countries have signed the pledge. Rapid CH₄ emission reductions are critical for the EU to meet its climate targets (EEA 2022; 2025).

The energy sector accounts for more than one third of global anthropogenic CH₄ emissions and offers the greatest short-term potential for CH₄ abatement (IEA 2024b). More than in any other CH₄ emitting sectors, many CH₄ mitigation measures in the energy sector are a very cost-effective way to limit warming in the near term: more than 50% of emissions from the oil and gas industry could be abated at no net cost (IEA 2024a). Best practice is well established in the oil and gas sector, with some operators performing up to 100 times better than others. Methane mitigation opportunities in the agriculture and waste sectors are not as developed or considered more challenging, although they will eventually also need to be implemented. All these reasons contribute to making the energy and in particular oil and gas sector the low-hanging fruit of methane mitigation globally, which explains why our efforts are currently focused on this area of industry.

The EU-MER applies to

According to Art. 1, the EU-MER applies to:

- Mining and post-mining activities related to active underground and surface coal mines, including CH₄ emission from ventilation shafts, drainage stations, venting and flaring
- Closed and abandoned underground coal mines where production ceased after 3 August 1954
- Oil and fossil gas exploration and production

- ▶ Inactive, temporarily or permanently plugged and abandoned oil and gas wells (IPAW)
- ▶ Fossil gas gathering and processing in the EU
- ▶ Natural gas infrastructure, including transmission and distribution, underground storage and LNG facilities, but excluding metering systems at final consumption points and the parts of service lines between the distribution network and the metering system located on the property of final customers.
- ▶ Methane emissions occurring outside the Union, with respect to imported crude oil, natural gas and coal placed on the Union market.

The main provisions of the EU-MER in a nutshell

This list provides a compact overview of the main provisions of the EU-MER. All main tasks of the Member States and their competent authorities are discussed in more detail in the following chapters of this report.

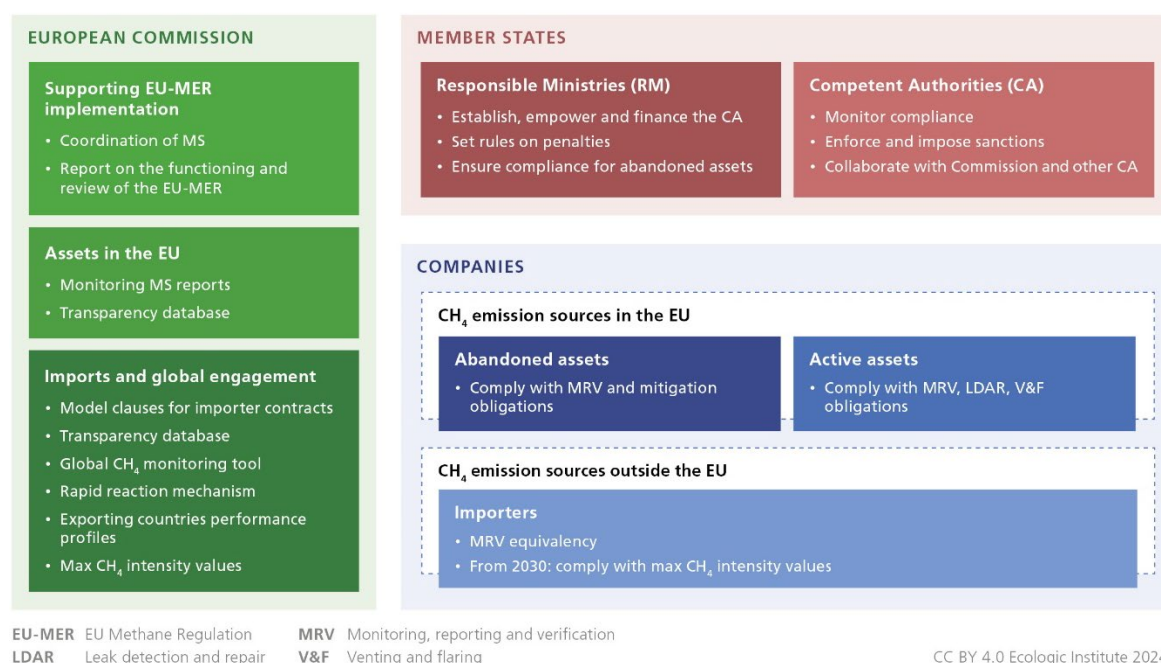
- ▶ Detailed **monitoring, reporting and verification (MRV)** must be implemented by asset operators and those legally responsible for closed and abandoned assets.
- ▶ Mandatory **leak detection and repair (LDAR)** measures.
- ▶ **Restrictions on venting and flaring**, which are prohibited except in specific circumstances. In all cases, flaring must comply with mandatory technical requirements.
- ▶ **Routine and non-routine inspections** to be conducted by the competent authorities (examined in detail in Chapter 6)
- ▶ Concerning **inactive, temporarily and permanently plugged, and abandoned oil and gas wells (IPAW), as well as closed and abandoned underground coal mines**: the Member States must (examined in detail in Chapter 5):
 - Establish, publish, and regularly update an **inventory** of such wells and mines.
 - **Identify the legal entities** responsible for the MRV, LDAR and other mitigation measures. If no responsible party with adequate financial means can be identified, **liability falls to the Member State**.
 - Ensure **systematic CH₄ measurements** are conducted, **mitigation plans** developed, and **mitigation measures** implemented.
- ▶ **Fossil fuels placed onto the EU market by importers** are subject to equivalent monitoring, reporting and verification obligations ("**MRV equivalence**") as if extracted in the EU. By 5 August 2028, importers must report the methane intensity of the production of the fossil energy products they import. For contracts concluded or renewed after 3 August 2024, these obligations must be incorporated into supply contracts. For older contracts, importers are required to undertake "all reasonable efforts" to require compliance from their contracting partners.
- ▶ For import contracts concluded or renewed after 5 August 2030, importers must demonstrate that imported products comply with **maximum methane intensity thresholds by 5 August 2030**. These thresholds will be established by the European Commission through a procedure defined in the EU-MER.
- ▶ The European Commission will publish a **methane transparency database**, including **methane performance profiles** of Member States, EU-based producers and importers, as well as of third countries from which the EU imports fossil fuels. Additionally, the Commission will establish a **global methane monitoring tool** and a **rapid reaction mechanism** to address super-emitting events.

- ▶ The Member States and their competent authorities must **publish extensive information on the EU-MER implementation**. The competent authorities must set up a procedure to **respond promptly to complaints concerning potential infringements of the EU MER** lodged by any natural or legal person.
- ▶ The **Member States must establish competent authorities and equip them with the necessary resources and powers** to carry out all tasks assigned to them under the EU-MER.
- ▶ By 5 August 2025, the Member States must **establish rules on penalties** for breaches of the EU-MER. These rules must adhere to detailed principles set out in the EU-MER.

Overview of actors involved in the EU-MER implementation

Figure 1 illustrates the **key actors for the EU-MER's implementation**. These are the responsible ministries and the competent authorities of the Member States, the operators and undertakings subject to EU-MER obligations and the European Commission.

Figure 1: EU-MER implementation: key actors and actions



Source: Piria, de la Vega, and Velten (2024)

Key milestones for national implementation in 2025-2027

In Romania, the draft Government Decision (Romanian Ministry of Energy 2025) on establishing certain measures for the implementation of the EU-MER has been published for public consultation on 28 March 2024. There is no official deadline communicated on the website of the Ministry of Energy for receiving responses to the draft.

According to the draft, the Ministry of Energy (ME) may be assigned overall coordination responsibilities for the EU-MER implementation. This would involve coordinating other ministries and public authorities according to their competence, including the Ministry of Environment, Waters and Forests, the National Environmental Protection Agency, the National Environmental Guard, the Ministry of Economy, Digitalisation, Entrepreneurship and Tourism, the Commercial Company for Mine Conservation and Closure Conversmin S.A., the Romanian Accreditation

Association (RENAR), the Ministry of Finance, the Romanian Customs Authority, the National Authority for Regulation in Mining, Petroleum and Geological Storage of Carbon Dioxide, and the National Energy Regulatory Authority (ANRE).

Table 1 is a non-exhaustive list of the most important milestones for the implementation of the EU-MER in Romania during the period until early 2027. It identifies who is responsible for each action. Table 1 assumes that the overall responsibility for reporting EU-MER implementation to the Commission lies with ME. Chapter 2 provides a more detailed discussion of the respective roles of the responsible ministry and the competent authorities. Chapters 5, 6, and 7 provide a more detailed description of the tasks and timelines related to inventories, inspections and other tasks.

Table 1: Selected deadlines for implementation in Romania until early 2027

By	Who	What
5 Feb 2025	ME	Notify Commission name and contact detail of their CAs
Spring 2025	CA	CA should be able to receive, analyse and react to a series of incoming reports: various venting and flaring notifications and reports the operators must submit from January 2025 onwards; LDAR programmes for active oil and gas wells the operators must submit by 5 May 2025; first reports the importers must submit by 5 May 2025. After these deadlines, the CA must deal with a continuous inflow of reports.
5 Aug 2025	CA	Notify Commission of rules on penalties applicable to infringements and measures to implement those rules.
5 Aug 2025	CA	Assuming that the Romanian government notifies the Commission of evidence confirming the existence of more than 40,000 recorded IPAW in Romania: publish an inventory covering at least 20% of IPAW, with priority being given to inactive wells and temporary plugged wells. If the Romanian government does not notify the existence of 40,000 IPAW: publish complete inventories of closed & abandoned assets. The inventories must be kept up to date at least annually afterwards.
2025	ME	Identify legal entities with adequate financial means to fulfil the obligations concerning the IPAW contained in the inventory due by 5 Aug 2025. There is no formal EU-MER deadline, but the sooner these entities are identified, the lower the costs for the public budgets and the more rapid the emission reductions.
Ca. Aug 2025	CA	Finalise lists of sites to be inspected and start routine inspections. This is no formal EU-MER deadline, but practically necessary to finalise the first round of inspections by May 2026.
5 Aug 2025	CA	Receive, analyse and react to reports that oil and gas sector operators must submit containing the quantification of source-level methane emissions as well as the reports to be submitted by coal mine and drainage station operators containing data in yearly source-level CH ₄ emissions.
5 Nov 2025	CA	The reports as of the previous line must be published.
2025	CA	Ability to deal with complaints. The first complaints might be lodged in 2025, for example if companies do not fulfil their reporting obligations.

2026	CA	Ability to carry out inspections following a complaint
5 Feb 2026	CA	Receive, analyse and react to reports that oil and gas sector operators must submit containing the quantification of source-level methane emissions for operated assets, based on measurement or, where direct measurement is not possible, at least specific emission factors based on source-level quantification or sampling.
5 May 2026	CA	The reports as of the previous line must be published.
5 May 2026	CA	Finalise the first round of routine inspections.
5 May 2026	ANRM-PSG	Report emissions from closed and abandoned coal mines and IPAW or ensure that the responsible entities do so.
31 May 2026	CA	Receive, analyse and react to the renewed reports by the oil and gas sector as well as coal mine and drainage station operators.
5 Aug 2026		The inventory must cover at least 40% of the IPAW (assuming Romania notified existence of >40,000 IPAW).
5 Aug 2026	CA	Review and publish the reports on CH ₄ emissions from closed and abandoned coal mines and IPAW.
5 Aug 2026	ANRM-PSG	Prepare mitigation plans for closed and abandoned coal mines and IPAW (as far as covered in the inventory due by 5 Aug 2025) or ensure that the responsible entities do so.
5 Nov 2026	CA	Review and publish the mitigation plans for closed and abandoned coal mines and IPAW submitted by the responsible entities or by the responsible ministries.
Jan 2027	CA	Receive, analyse and react to reports that importers must submit to demonstrate that import supply contracts concluded or renewed after 5 August 2024 comply with the EU-MER obligations, and to demonstrate their reasonable efforts to require MRV-equivalence also with regard to older contracts.
5 Feb 2027	CA	Receive, analyse and react to reports that oil and gas sector operators must submit containing the quantification of source-level methane emissions for non-operated assets, based on measurement or, where direct measurement is not possible, at least specific emission factors based on source-level quantification or sampling.

2 Responsible ministry and competent authorities

The EU-MER systematically distinguishes between tasks assigned to Member States and those specifically assigned to their competent authorities. Table 2 presents an overview of the respective functions and tasks as defined by the EU-MER.

Table 2: Overview of EU-MER tasks assigned to the ME and to the Romanian CAs

Tasks of the ME	Tasks of the competent authorities
<p><u>Policy making:</u></p> <ul style="list-style-type: none"> ▪ Set up the CA and ensure that they have adequate powers and resources. ▪ Lay down the penalty regime and take all measures to enforce it. ▪ Ensure that certification, accreditation schemes or equivalent qualification schemes are available. ▪ Report to and collaborate with the EU Commission, publish specific information. <p><u>Operational:</u></p> <p>For disused¹, closed, and abandoned oil and gas wells and coal mines, MS must:</p> <ul style="list-style-type: none"> ▪ Set up inventories. ▪ Identify solvent responsible parties, where possible. ▪ Develop mitigation plans and implement mitigation measures and report on them to the CA (or ensure that “responsible parties” do so). 	<ul style="list-style-type: none"> ▪ Plan and carry out routine and non-routine inspections. ▪ Analyse and evaluate incoming reports submitted by operators and undertakings subject to EU-MER obligations. ▪ Take decisions on a number of technical issues, including monitoring and reporting, leak detection and repair programmes, venting and flaring reports, exemptions. ▪ Impose penalties to sanction non-compliant behaviour. ▪ Process and react to complaints ▪ Produce a series of reports and notifications to the EU Commission, publish specific information. ▪ Cooperate with the CA of other MS and with the EU Commission.

The EU-MER states that each EU Member State (MS) must² “*designate one or more competent authorities responsible for monitoring and enforcing the application*” of the EU-MER. Each MS must notify the Commission of the CA’s name(s) and contact details by 5 February 2025. The MS must ensure that the CA have adequate powers and resources to perform the EU-MER obligations [Art 4].

¹ For the sake of brevity, we use the “disused assets” to refer at once to the following three categories defined in the EU-MER: “abandoned underground coal mines” (AUCM); “closed underground coal mines” (CUCM); “inactive, temporarily or permanently plugged and abandoned oil and gas wells” (IPAW). Certain provisions are common or similar to all three categories of assets, others are specific.

² For the sake of clarity, we use “must” instead of the original wording “shall” for all EU-MER provisions where “shall” actually means “must”. See: Felici, A. (2012). ‘Shall’ ambiguities in EU legislative texts. *Comparative Legilinguistics* 10 (January):51-66. <https://doi.org/10.14746/cl.2012.10.04> .



As of the finalisation of this report (31 March 2025), no official legal act has been identified as having been published or notified to the European Commission designating the competent authority or authorities responsible for the implementation of the EU-MER in Romania.

The initial implementation deadline has passed, despite information being available to all Member States since at least the second half of 2023 regarding the requirement to establish the relevant authorities. In light of the extensive responsibilities associated with implementation, as outlined in this report, the timely establishment of the institutional framework and the initiation of operational activities remain priorities.

According to the draft Government Decision (Romanian Ministry of Energy 2025) published for public consultation on 28 March 2025, the Ministry of Energy may be assigned overall coordination responsibilities for EU-MER implementation. Coordination is expected to involve several other ministries and public authorities, with responsibilities to be allocated accordingly. If the draft government decision is formally adopted without changes at the end of the public consultation, then:

- **The Ministry of Environment, Waters and Forests (MMAF)**, through the National Environmental Protection Agency, would manage the national accounts within the European Union Greenhouse Gas Emissions Registry under Romanian jurisdiction, in accordance with the legal provisions of the European Union and applicable international regulations;
- **The National Environmental Protection Agency (ANPM)** would be responsible for the monitoring activities specified in the EU-MER. This includes, among other things, responding to filed complaints, approving LDAR programmes, collecting, managing, and reporting to the Ministry of Energy the reports received from operators and undertakings and imposing administrative sanctions and measures in case of non-compliance. The ANPM is already responsible for the implementation of the EU Industrial Emissions Directive.
- **The National Environmental Guard (GNM)** would ensure inspection activities following the inclusion of methane emissions as environmental factors in the environmental permits of operators. It also would be responsible for responding to complaints and imposing administrative sanctions and measures in cases of non-compliance;
- **The Romanian Accreditation Association** would be responsible for accrediting verification entities;
- **The National Authority for Regulation in the Mining, Petroleum, and Geological Carbon Dioxide Storage Sectors (ANRMPSG)** – also known as the former National Agency for Mineral Resources (ANRM) – would be responsible for inventorying inactive wells, temporarily closed wells, and permanently closed and abandoned wells, as well as for verifying and approving restrictions on venting or flaring, setting regulated tariffs, and certifying individual verifiers;
- **The National Energy Regulatory Authority** would be responsible for approving tariffs for transmission and distribution operators, as well as for certifying individual verifiers;
- **The Ministry of Economy, Digitalisation, Entrepreneurship, and Tourism (MEDAT)**, through the Commercial Company for Mine Conservation and Closure Conversmin S.A., would be responsible for inventorying, monitoring, reporting, verifying, and mitigating closed and abandoned coal mines;
- **The Ministry of Finance (MF)**, through the Romanian Customs Authority, would be responsible for monitoring, reporting, and verifying methane emissions generated

outside the European Union in relation to crude oil, natural gas, and coal introduced to the market by importers.

Principles of governance in the EU-MER implementation

The mandate of the CAs is to enforce the EU-MER provisions. However, some of their functions and tasks may be affected by tensions between this mandate and other policy or shareholder goals pursued by executive institutions, including the overseeing ministry MŽP, which establishes and controls the CA.

The CAs should maintain a certain degree of autonomy from MŽP and their political superiors in their day-to-day operations to shield them from potential interference in the following risk areas:

- **Favouritism for state owned enterprises:** the CA may be required to impose sanctions or costly remedial actions on private law entities that may include state-owned enterprises (see Chapter 3). Even before such decisions may have to be made, the CA is responsible for evaluating reports submitted by the fully or partially state-owned enterprises and inspecting their sites and premises. In such cases, there may be conflicting priorities between the effective implementation of the EU-MER and another government objectives, such as the profitability of the state-owned enterprise.
- **Monitoring government compliance:** as described in Chapter 6, the MS may have various measurement and mitigation obligations regarding disused fossil fuel extraction sites. The CA is responsible for monitoring and evaluating these activities. In some cases, the CA may find itself monitoring the very ministry that has assigned the task to them.
- **Risk of “enforcement venue shopping” by importers:** under the EU-MER, importers must submit reports to the CA of the MS where their legal entity is established [Art. 27.1], not the CA of the country where the fossil fuels physically enter the Union. If importers perceive that some CAs are enforcing the EU-MER provisions more leniently, they may shift their import contracts to subsidiaries in MS with laxer enforcement. While CAs are required to inspect domestic operators, they have discretion over whether to inspect importers, unless a substantiated complaint is made. National or regional governments may seek to attract importers, potentially pressuring the CA to adopt a more lenient enforcement approach to increase tax revenue.
- **Conflicting government priorities:** some policy makers may view the EU-MER mandate as conflicting with other goals, such as energy security or low energy costs. Therefore, they might exert pressure on the CA to not fully implement the EU-MER

For CA to perform their duties effectively, they must be shielded from undue political or executive pressure. Their day-to-day operations should be guided by their mandate, not by orders from political superiors. This is supported by the EU-MER text, which requires Member States to establish CAs and equip them with the necessary powers and resources.

While the level of autonomy required for EU-MER CAs may be lower than that of, for example, energy regulators, they must still function with operational independence. Their planning and execution of tasks should be guided exclusively by their EU-MER mandate and remain free from any conflicting interests. Thus, CAs should maintain an arms-length relationship with political authorities in both the executive and legislative branches.

Based on **OECD recommendations** for the independence of regulatory authorities (OECD 2017), an arms-length relationship between government and CAs is key to safeguarding their operational autonomy. This can be achieved through:

- **Delegation:** CAs should be established as separate structures, with oversight delegated to administrative bodies other than the founding ministries. Instead of being units within ministries, CAs should operate as parts of existing (or, where needed, new) executive agencies to increase distance from political influence.
- **Stable financing:** Securing multi-annual budgets helps reduce political leverage, preventing governments from influencing CAs by cutting funds, particularly for EU-MER enforcement units.
- **Accountability and transparency:** Clear mechanisms for accountability and transparency are essential. EU-MER already requires the publication of most reports. Proper implementation can reduce favouritism by making information publicly accessible and open to scrutiny.
- **Compliance rules:** Robust compliance rules should define codes of conduct for all staff, including outsourced personnel. CAs should also foster a culture of independence through recruitment, training, and operational freedom.

Certain functions of the CA and of the overseeing ministry are **inherently vulnerable to undue influence or attempted corruption** by private operators subject to EU-MER obligations. Key risk areas include:

- Evaluating reports and mitigation plans submitted by companies subject to EU-MER obligations (see Chapter 4 and Annex below);
- Conducting inspections of operators and importers (see Chapter 5);
- Issuing decisions that may impose significant costs on operators and importers, particularly regarding mandatory remedial actions and sanctions (see Chapter 4 and Annex 2);
- Handling complaints (Chapter 4).

Similar risks apply to several tasks of the responsible ministries (RMs):

- Identifying responsible parties (RP) liable for mitigation costs related to disused assets (see Chapter 6);
- Verifying claims by the RP's that they lack "*adequate financial means*" to meet these obligations; [Art 18(8) EU-MER]
- Assessing whether sanctions imposed by a CA would "*endanger the security of energy supply*" [Art 33(2)].

If undue influence or corruption affects CA or RM actions in these areas, it would directly or indirectly undermine climate change mitigation.

Even if the state assumes liability from an RP and executes mitigation measures promptly, it incurs fiscal costs, potentially limiting funds available for other climate efforts. It also burdens the public budget and harms credibility. Allowing a responsible party to evade liability may create the false impression that climate mitigation proceeds unaffected—yet even prompt state intervention carries financial consequences and reputational risks.

Identifying high-risk functions is a crucial first step in preventing undue influence and corruption within public and private entities. This analysis aims to support those less familiar with

EU-MER in recognising vulnerable areas. As in other policy domains, EU-MER contains inherent risks requiring resilience strategies for both CAs and RMs.

At national, EU and international levels, numerous resources address how to prevent corruption and undue influence. For example, the OECD recommends the following preventive measures (OECD 2017):

- **Compliance rules and procedures:** Clear rules should guide staff conduct, building on existing legal obligations. These should also cover post-employment activities (e.g. “re-volving door” scenarios).
- **Recruiting practices:** Staff should be selected based on skills and ethics, with a strong focus on integrity and independence during the hiring process.
- **Incentives:** Adequate salaries and career prospects within CAs help deter undue influence.
- **Whistleblowing:** CAs should implement whistleblowing procedures aligned with the EU Whistleblowing Directive.

In performing their duties under this Regulation, the Commission, CAs and verifiers should consider and utilise internationally available information, such as that from the International Methane Emissions Observatory (IMEO), particularly regarding data aggregation methodologies, verification of methodologies and statistical processes used by operators and importers to quantify CH₄ emissions in their reports. Relevant reference criteria may include the Oil and Gas Methane Partnership 2.0 (OGMP 2.0) reporting framework, technical guidance documents and reporting templates.

3 Sources of CH₄ emission from energy sector in Romania

To implement the EU-MER, the Romanian government must ensure that the responsible ministry and the competent authorities have adequate resources and powers to fulfil their tasks. This includes enabling the responsible ministry to establish an inventory of disused fossil fuel extraction assets and granting them the ability to carry out CH₄ measurements and mitigation measures when the ME or another public authority is designated as the responsible party for such disused assets (the conditions under which this applies are discussed in Chapter 6). Competent authorities must also be equipped to analyse and review incoming MRV, LDAR, and mitigation reports, make informed decisions, and conduct the required inspections.

To determine the resources required, the responsible ministry must first estimate the scope of the tasks ahead. To support this estimation, this section provides a short overview of available information on CH₄ emissions from the energy sector, the types and number of relevant sites, and the relevant market players.

Methane emissions from the energy sector in Romania

No publicly available datasets currently exist to quantify CH₄ emissions from individual oil and gas wells in Romania. In its National Inventory Reporting, the Romanian Ministry of Environment, Waters and Forests and National Environmental Protection Agency (2024) estimated CH₄ emissions associated with the exploration, extraction, transport, storage, distribution, and venting and flaring of oil and gas, using standard nationwide emission factors provided by the IPCC. By their nature, such standard factors are imprecise. In Romania's case, there are strong indications that their use results in a substantial underestimation of actual emissions. Therefore, it is highly likely that the CH₄ emissions from the energy sector, as reported in Romania's latest National Greenhouse Gas Inventory Report submitted to the UNFCCC by the Romanian Government (Romanian Ministry of Environment, Waters and Forests and National Environmental Protection Agency 2024), are significantly underestimated.

This conclusion is supported by a peer reviewed study (Stavropoulou et al. 2023) based on the results of a 2019 measurement campaign conducted under the Romanian Methane Emissions from Oil and Gas (ROMEIO) project. In this campaign, emission rates were quantified at 178 oil production sites, following a screening of 887 sites. Using a robust, peer-reviewed statistical methodology, the data from the campaign were extrapolated to provide a national estimate of annual CH₄ emissions from oil extraction in Romania. The central estimate of 120 kt CH₄ is more than 5 times higher than the figure reported by the IEA Methane Tracker 2022 for emissions in 2019. More significantly, it is approximately 2.5 times higher than the figure Romania reported in its 2022 Greenhouse Gas Inventory of 2022 for CH₄ emissions in 2020.

Notably, Romania's latest National Greenhouse Gas Inventory submitted to the UNFCCC in December 2024 (Romanian Ministry of Environment, Waters and Forests and National Environmental Protection Agency 2024) neither references the study by Stavropoulou et al. (2023) nor mentions the ROMEIO project. The inventory report includes a graphic (Figure 3.58, page 251) showing a slight but steady decline in fugitive CH₄ emissions from the oil and gas sector during the period from 2015 to 2022. It appears that the reported CH₄ emissions from oil and gas activities have not been adjusted to reflect the findings of Stavropoulou et al. (2023).

Overview of the CH₄ emission sources to be monitored by the Romanian authorities

The measurement campaign analysed in Stavropoulou et al. (2023) also confirmed that CH₄ emission intensity across individual sites in the oil and gas industry typically exhibits a heavy-tailed and positively skewed distribution, consistent with findings from previous studies on oil and gas extraction in the United States and Canada. This underscored the importance of implementing the measurement and mitigation measures prescribed by the EU-MER across all relevant sites.

Oil and gas wells:

We were unable to find a precise figure for both active and inactive Romanian **oil and gas wells**. However, estimates suggest that between 50,000 and 60,000 oil and gas wells exist (Lei 2022; illuminem 2023; Actmedia, n.d.) that would need to be identified in the course of the EU-MER implementation. A definitive assessment is challenging as no official, publicly accessible inventory currently exists that covers all oil and gas wells in Romania (Baciul, Ghiorghiul, und Hmoudahl 2023). Nonetheless, several scientific studies provide fragmented information about the number and locations of Romanian oil and gas wells:

- The GEM (2024b) indicates that there are currently 12 oil fields and 20 gas fields in operation, with 9 gas fields being prepared for commissioning and one new gas field recently discovered. Approximately one-third of these fields are offshore in the Black Sea, with the remaining two-thirds scattered across the mainland.
- According to Baciul, Ghiorghiul, and Hmoudahl (2023), 776 abandoned and closed oil and gas wells are located in the Transylvanian Basin.
- Pene, Octavian, and Bogdan (2006) state that more than 7,800 oil and gas wells are located on the Moesian Platform.

Although the exact number of wells remains unclear, the owners of the respective assets should be largely known to the Romanian state. Under the Petroleum Act (No. 238), all oil and gas resources in Romania are state-owned, and extraction rights are granted through licenses issued to interested companies (Volciuc-Ionescu 2017). This means that, at least at some point in time, the government either allocated the rights to a specific company or retained ownership itself.

Gas infrastructure:

The Romanian national gas transmission system comprises more than 14,000 km of pipelines operating at pressures ranging from 6 to 63 bar. It is equipped with 8 gas compressor stations (located in Șinca, Onești, Siliștea, Jupa, Podișor, Bibești, Onești M, Gherăești), 1,141 metering-regulating and 59 valve control stations that serve as key transfer points between the transmission grid and gas distribution networks, as well as 1,045 Cathodic Protection Stations that help maintain pipeline integrity (TRANSGAZ 2021). The entire transmission network is operated by TRANSGAZ S.A. – a stock company, with 59% of the shares owned by the Romanian state.

Romania's gas distribution system is operated by 27 companies (ANRE 2025). Two of the major operators are:

- Distrigaz Sud Rețele, who is the leading natural gas distribution operator in the southern part of Romania, managing a network of approximately 23,800 km and serving over 2.27 million customers (Distrigaz Sud Rețele 2025). However, the operator has signalled its commitment to reducing methane emissions by endorsing the global OGMP 2.0 standard under the Oil and Gas Methane Partnership (UNEP 2025).

- Delgaz Grid, formerly known as Distrigaz Nord, who operates a natural gas distribution network with a total length of over 25,700 km (E.ON Romania 2024). It distributes gas (and electricity) to approximately 3.6 million customers in the northern half of Romania, covering over 3,600 localities. Delgaz Grid was acquired by the E.ON group in 2005 (Bund der Energieverbraucher 2004). In December 2024, E.ON reached an agreement to sell its stake in E.ON Energie Romania to Hungary's state-owned company MVM, but the transaction is currently under analysis in a commission organised by the Romanian state.

According to the Gas Storage Europe database, as of July 2021, six gas storage facilities were operational in Romania, with an additional four planned to enter into operation (GIE 2021). All of them are located in depleting fields.

Currently, there is no operational LNG terminal in Romania (ACER 2025). However, plans are underway to construct a facility on the Black Sea (Energyworld 2024). In October 2022, Romgaz and Azerbaijan's SOCAR signed a memorandum to jointly develop this terminal, and by April 2024, a feasibility study yielded positive results (GEM 2024a).

Coal mines:

Coal extraction in Romania occurs across different regions and is carried out by only a handful of operators. As of 2024, Romania maintains a limited number of operational coal mines, reflecting a significant decline in the industry amid national and European decarbonisation efforts. The country operates four active underground hard coal (anthracite) mines, all located in the Jiu Valley region and managed by Complexul Energetic Hunedoara (CEH), which has been in insolvency since 2019 (Euracoal 2023). In addition, the state owned Oltenie Energy Complex operates ten lignite mines, with an average annual production of approximately 18.5 million tonnes between 2017 and 2021 (Balkan Green Energy News 2023). Beyond these, Romania recorded 173 abandoned coal mining sites in the period between 1935 and 2019 (Assan 2024).

At present, there are no publicly available measurements or scientific quantifications of CH₄ emissions from individual coal mines in Romania. In the National Inventory Report, the Ministry of Environment, Waters and Forests and National Environmental Protection Agency (2024) employ nationwide standard emission factors from the IPCC to determine CH₄ emissions, which are separately provided for active and inactive underground and surface coal mines. This suggests that region- or asset-specific emission factors are likely unknown to the Romanian authorities, highlighting the need for data collection at asset level. As mentioned above, the use of standard emission factors for oil extraction sites in Romania has led to significant underestimation of CH₄ emissions.

Imports of coal, oil and gas:

We have been unable to find publicly available data on the exact number of oil, gas and coal importers in Romania. Nevertheless, the responsible competent authority should be prepared to receive reports from importers, requiring evaluation of the underlying CH₄ intensity and compliance with MRV equivalence from the producing countries. According to the IEA (2023a), in 2022 Romania imported 76% of its oil, 18% of its gas, and 20% of its coal. In 2023, Romania's crude oil imports came mainly from Kazakhstan, Libya, Azerbaijan, Iraq and Norway (OEC 2024a).

According to the EU-MER, importers must report to the competent authorities of the Member States where they are legally established. Art 2(59) defines an "importer" as "*a natural or legal person who, in the course of a commercial activity, places crude oil, natural gas or coal originating from a third country on the Union market (...)*". Consequently, if fossil fuels entering Romanian territory are produced in another EU MS, they are not considered imports under the

EU-MER and are therefore not subject to Chapter 5 (Art. 27-31). Instead, they fall under the general provisions of Chapters 3 and 4, with implementation monitored by the CA of the MS where the fossil fuel is produced.

Conversely, it is important to note that the Romanian CA may need to evaluate reports from, and carry out inspections of, importers even when fossil fuels enter Romanian territory from another EU Member State. For example, consider a Romanian company purchasing an LNG cargo that enters EU territory via a terminal in Greece. If the Romanian buyer acquires the gas directly from a trader established outside the EU, the Romanian buyer is considered an importer under the EU-MER and must submit reports to the Romanian CA in accordance with Articles 27–29 of the EU MER. However, if the Romanian buyer contracts with a trader established in another EU Member State, the Romanian company is not considered an importer under the EU-MER. In such a case, the obligation to report falls on the trader, who must submit the report to the CA of the EU Member State where it is legally established. Notably, this trader does not need to be legally established in Greece; it may be established in any EU Member State and simply use an LNG terminal located in Greece.

As another example, consider a Romanian company purchasing hard coal produced in Poland. In this case, the Romanian buyer is not classified as an importer under the EU-MER. All provisions related to MRV, as well as mitigation measures, remain applicable. However, responsibility for enforcement lies with the competent authority of Poland, where the fossil fuel is produced.

4 Monitoring, supporting and enforcing implementation

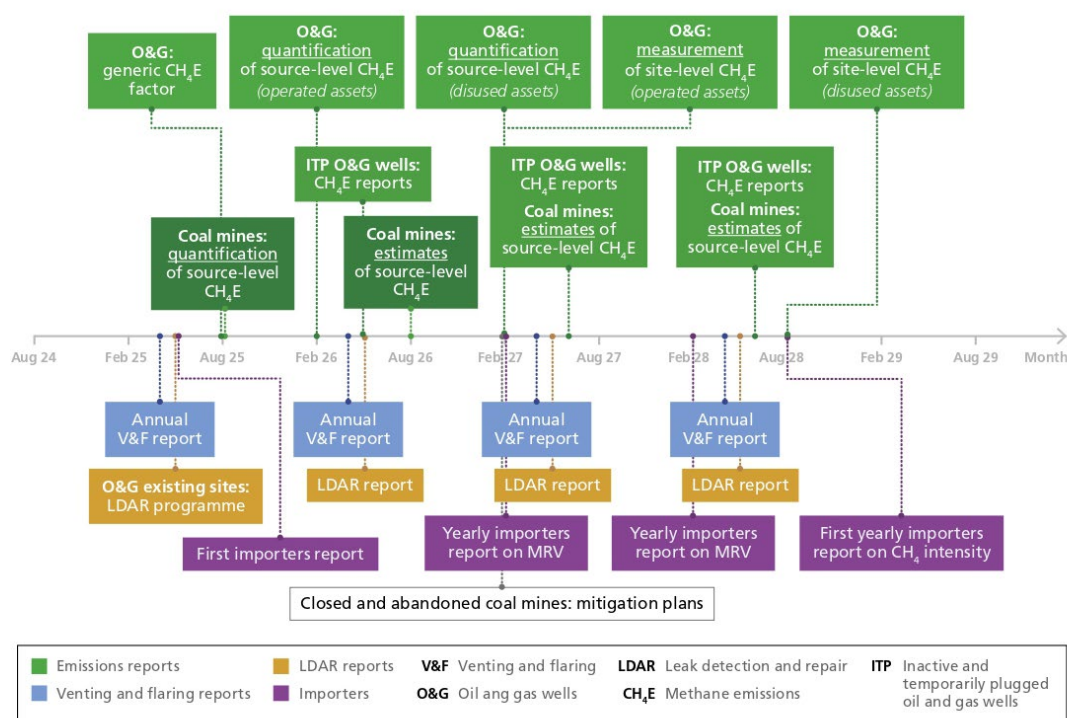
This chapter outlines key duties of the CAs and the responsible ministries in supporting, monitoring, and enforcing the EU-MER implementation.

Two major tasks are addressed separately in the following chapters: The first is the establishment of inventories of disused fossil extraction sites, which falls under the responsibility of the ministries. The second concerns the planning and execution of inspections, which is the responsibility of the CAs.

CAs to evaluate technical reports submitted by regulated entities

The CA will receive and must evaluate a range of technical reports submitted by operators of active assets, by importers, and by entities responsible for disused extraction sites. These reports include emissions monitoring, reporting and verification reports, LDAR reports, venting and flaring reports, reports on the mitigation plans and on the implemented mitigation measures, and import-related reports. A full list of reports to be submitted to and evaluated by the CA is provided in Annex 1.

Figure 2: Timeline of selected incoming reports to be evaluated by the CA



The effectiveness of the EU Methane Emissions Regulation depends critically on the technical competence, institutional independence, and preparedness of Competent Authorities across Member States. These authorities are central to verifying emissions data, overseeing mitigation obligations, and ensuring the credibility of the entire regulatory framework.

Competent authorities play a central role in ensuring that reported emissions data under monitoring and reporting requirements in Article 12 are technically sound, consistently verified and

comparable across operators and Member States. This supervisory role is particularly important in the context of imports, where domestic enforcement mechanisms will need to align with international data and verification standards. As global methane mitigation strategies are looking towards performance-based economic instruments, robust and accurate monitoring, reporting and verification becomes essential. For the intensity standard on domestic and imported fossil fuels to be credible and effective, this MRV enforcement must be ambitious. For this, CAs require strong technical capacity in emissions measurement, data reconciliation, and the evaluation of advanced technologies. They must also be equipped to independently review and, where needed, challenge verification statements provided by accredited parties.

Figure 2 does not include various reports related to irregular occurrences, such as notifications of exceptional venting or flaring events, or justifications for exceptional delays in implementing certain measures. In practice, the Romanian CAs are likely to face a continuous flow of incoming reports. The recurring cycle of reports to be submitted by operators and undertakings subject to EU-MER obligations, followed by reviews or evaluations conducted by the CA, are yearly obligations that extend beyond the timeframe shown in the chart.

CAs to take enforcement decisions

Based on these reports and any other evidence, the CAs are required to make various decisions, some of which may have significant implications for the operators and undertakings concerned, as well as for the effectiveness of CH₄ mitigation. These technical decisions are among the most important tasks for ensuring the effective implementation of the EU-MER, and include:

- Approving, rejecting or requiring amendments to LDAR programmes and schedules
- Requiring modifications of the plans to comply with venting and flaring requirements
- Imposing remedial actions and/or penalties against non-compliant entities
- Exempting individual operators, undertakings or entities from certain obligations, under precisely defined conditions

Given the significance of these decisions, it is essential that the CAs are equipped with the necessary resources and skills to enable substantiated and timely decision-making. This issue is examined further in Chapter 7.

A full list of enforcement decisions to be taken by the CA is available in Annex 2.

Outgoing reports and publications to be produced by the CA

The EU-MER requires CAs to publish specific information and submit reports and notifications to the European Commission. Certain reports must be made publicly available on a designated website. Where information is withheld under Art 4 of Directive 2003/4/EC on public access to environmental information, the CA must indicate the type of information withheld and the reason for its confidentiality [Art 5(4)].

A full list of the outgoing reports, notifications and publications is provided in Annex 3.

Cooperation at the EU level and with third countries

Beyond submitting notifications to the European Commission as outlined in the previous paragraph, CAs must also cooperate at the EU level and with third countries. Each CA must establish a contact point to support networking with other Member States' CAs, as coordinated by the Commission [Art 4(2)]. CAs are required to cooperate with each other and with the Commission and may also engage with third-country authorities [Art 5(3)]. Regarding penalties, they must *“cooperate closely to ensure that their powers are exercised, and that the administrative*

penalties and administrative measures they impose are designed and applied in an effective and consistent way across the Union” [33(4)]. The Commission may request information from CAs and MS to fulfil its duties under the EU-MER.

Dealing with complaints

The CA must be able to receive written complaints from natural or legal persons regarding potential breaches of the EU-MER requirements [Art 7(1)]. If a complaint is substantiated, the CA must carry out a non-routine inspection [Art 6(4)]. However, the EU-MER does not define criteria to assess whether a complaint is substantiated.

If the CA decides not to investigate due to insufficient evidence, it must inform the complainant *“within a reasonable time but not later than 2 months”*. The wording implies that serious, well-substantiated complaints should be processed more quickly [Art 7(3)]. If the CA considers a complaint insufficiently substantiated to warrant an inspection, the complainant has the right to challenge this assessment in court and demonstrate that the complaint was substantiated.

“Where complaints that are not sufficiently substantiated are repeatedly lodged and for that reason deemed abusive”, the CA has no obligation to react [Art 7(3)]. The CA is not obliged to act on repeated, unsubstantiated complaints deemed abusive [Art. 7(3)]. The CA must publish indicative periods to take a decision on complaints [Art 7(5)]. Complainants must be kept informed of the steps taken and any appropriate alternative forms of redress, such as access to national courts [Art. 7(4)]. Additionally, the CA must publish indicative timelines for decisions on complaints [Art. 7(5)].

Laying down the penalty regime

The penalty regime for EU-MER infringements is defined in Art 33. Like other recent EU legislation, it includes more detailed provisions than earlier laws, but still leaves significant discretion to Member States. Each MS must lay down its own penalty rules and ensure their effective implementation [Art 33(1)]. These national rules must fully comply with EU-MER requirements; failure to do so may trigger an infringement procedure by the European Commission.

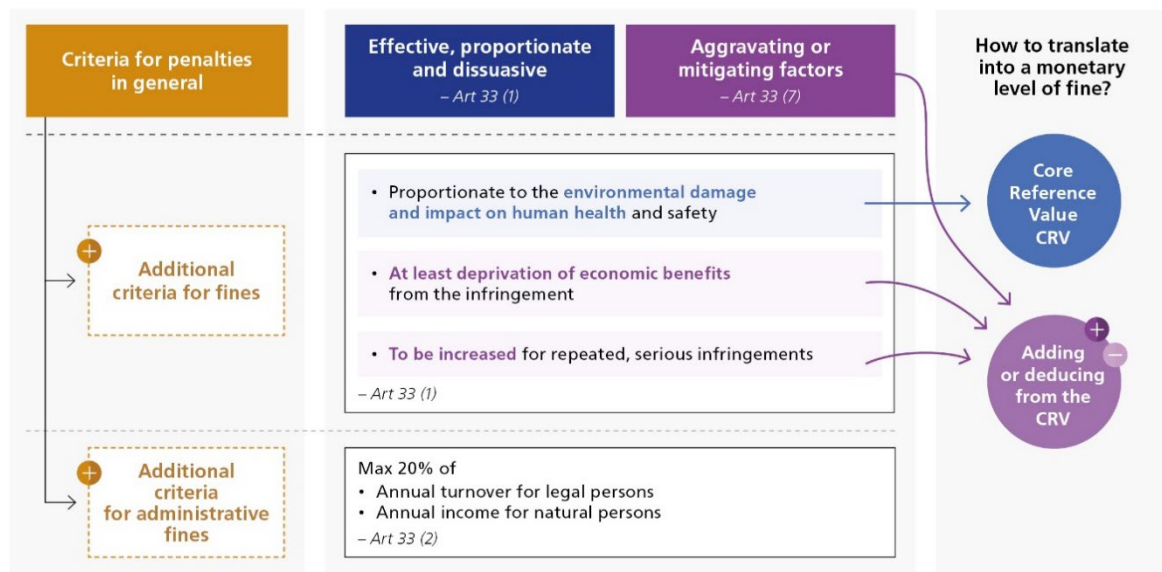
Once national rules are in place, the CAs – and in some Member States, the courts – have broad discretion in enforcement. The national rules and the way how this discretion is applied will strongly influence the effectiveness of EU-MER enforcement and the resulting CH₄ emissions reductions.

The EU-MER adopts a “toolbox approach” to penalties that combines fines, periodic penalty payments, and administrative measures. Member States must empower their CAs to impose at least a range of administrative penalties, including fines.

Each Member State must now operationalise the complex provisions of Art 33. A detailed analysis of the penalty framework, including suggestions for national implementation, is available in Piria, Sina and Dück (2024). Here, we summarise only the key findings of that study, as illustrated in Figure 3 and Figure 4.

The top section of Figure 3 outlines the general criteria that apply to all kind of penalties imposed for infringements of EU-MER provisions: penalties must be effective, proportionate and dissuasive [Art 33(1)]. In addition to this trias of principles, Art 33(7) specifies a mandatory list of aggravating or mitigating factors that Member States must consider when determining penalty levels. These factors are shown on the right-hand side of Figure 4.

Figure 3: Criteria for the level of penalties

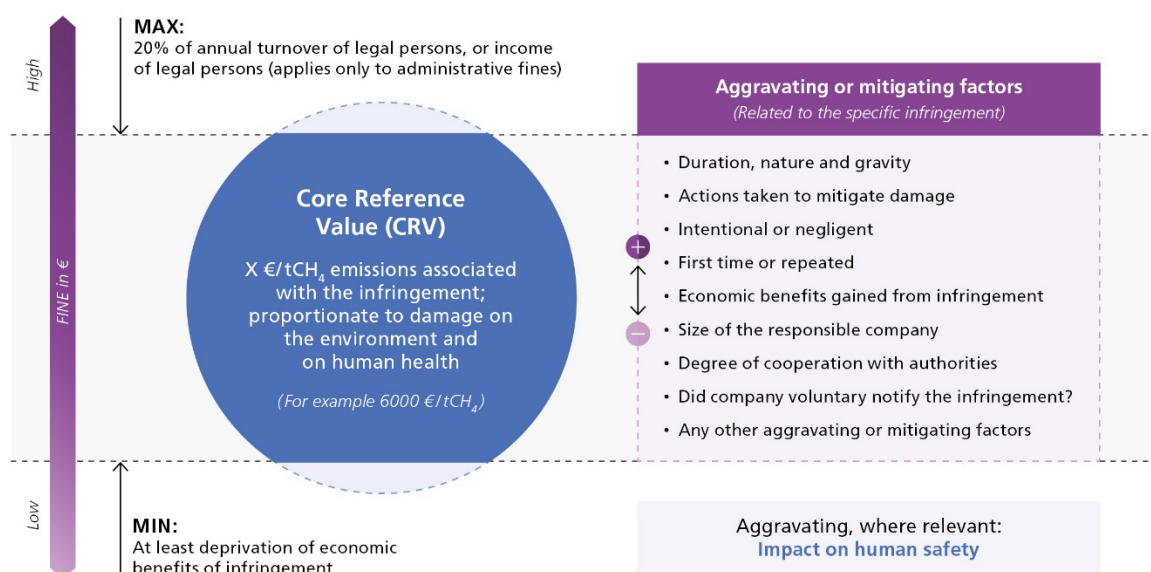


CC BY 4.0 Ecologic Institute 2024

As safety impacts will be rare, fine levels should, in most cases, be based on the environmental damage and the impact on human health. Accordingly, penalties should be proportional to the volume of CH₄ emissions directly or indirectly linked with the infringement.

Building on this principle, Piria, Sina and Dück (2024) – after considering several potential anchor points – propose a Core Reference Value (CRV) of 6,000 EUR per tonne of CH₄. This figure aligns with the penalty regime foreseen by the EU ETS Directive to sanction the behaviour of operators who do not surrender sufficient emission allowances, applying a CH₄/CO₂ equivalency factor of 29.8, quoted in recital (2) of the EU-MER. This standard fine level must then be adjusted for aggravating or mitigating factors, and must remain within the minimum and maximum thresholds defined by the EU-MER.

Figure 4: Core Reference Value (CRV) and other criteria to determine fine levels



CC BY 4.0 Ecologic Institute 2024

Certification, accreditation schemes or equivalent qualification schemes

MS must “*ensure that certification, accreditation schemes or equivalent qualification schemes, including suitable training programmes, are available*” [Art 14(16)].

This implies the need to review existing certification and accreditation procedures, and institutional setting in Romania to ensure that the inspection and verification activities required by Art. 8 and 9 of the EU-MER can be carried out effectively. In particular, accrediting qualified verifiers is essential to ensure that operators can meet the Regulation’s MRV provisions. MRV requirements under article 12 require that “Before submitting the report to the competent authorities, operators and undertakings shall ensure that the report is assessed by a verifier and includes a verification statement issued in accordance with Article 8.”

Verifiers provide the necessary assurance that emissions data submitted by operators is accurate, complete, and compliant with regulatory requirements. As methane mitigation efforts increasingly rely on performance-based policy instruments, the quality of verification activities directly influences the effectiveness and credibility of the regulation, both for domestic production and imported fossil fuels.

Verifiers are accredited at the Member State level, typically through national accreditation bodies. While this approach enables alignment with national regulatory structures, it also introduces the risk of fragmentation. Without coordinated oversight and common quality standards, verification practices may diverge across Member States, potentially leading to inconsistent enforcement and difficulties in comparing data. To mitigate this, Member States should follow harmonised EU-level accreditation protocols and ensure verifiers are trained and regularly evaluated.

The technical complexity of methane emissions measurement – particularly with the use of source-level and site-level measurements as well as reconciliation processes – requires verifiers to have strong technical competence. This includes the ability to assess the appropriateness of methodologies and technology used, the representativeness of sampling strategies including sufficient frequency, and the validity of uncertainty estimates.

In addition to the work of verifiers, CAs must retain the ability to independently review and reassess reports, even after formal verification. This approach provides a safeguard against inconsistent or insufficient verification and helps ensure uniform enforcement across the EU. For this to be effective, CAs must also possess the technical capacity to assess emissions data and the quality of verification activities.

5 Inspections

Rationale and overall principles

As shown in Figure 1, most of the actual MRV and mitigation activities required under the EU-MER are to be carried out by operators of oil and gas wells, coal mines, gas infrastructure, and by fossil fuel importers.

One of the main tasks for the competent authorities is to organise inspections to ensure compliance. These may be carried out directly by the CA or outsourced to qualified, independent service providers.

Inspection requirements and procedures under the EU-MER

The EU-MER mandates routine and non-routine inspections to verify and promote compliance.

Routine inspections are envisioned for operators and undertakings with relevant assets in the EU, but not for importers, who are only subject to non-routine inspections [Art 6(1)].

The first routine inspections must be completed by 5 May 2026. Afterwards, routine inspections must be carried out at least every 3 years. The programmes for routine inspections must be based on a risk assessment conducted by the CA, which should take into account *“the risks associated with each site, such as environmental risk, including the cumulative impact of all methane emissions as a pollutant, human safety and health risks, as well as any identified breaches of this Regulation”*. If a routine inspection reveals a serious breach of obligations, the next one must follow within 10 months [Art 6(3)].

According to Art 6(4), the CA must carry out non-routine inspections to:

- investigate substantiated complaints;
- ensure that the operators and undertakings subject to EU-MER obligations have implemented specific lead detection and repair (LDAR) and other mitigation measures;
- verify compliance by importers.

The non-routine inspection after a substantiated complaint is to be carried out as soon as possible and within a maximum period of 10 months following the reception of the complaint.

According to Art 6(2), the inspections must include the following elements, where relevant to the specific case:

- site checks or field audits;
- examination of documentation and records that demonstrate compliance, including MRV reports submitted by operators, undertakings and importers;
- CH₄ emissions detection and concentration measurements;
- any follow-up action to check and promote compliance of sites with the requirements of EU-MER.

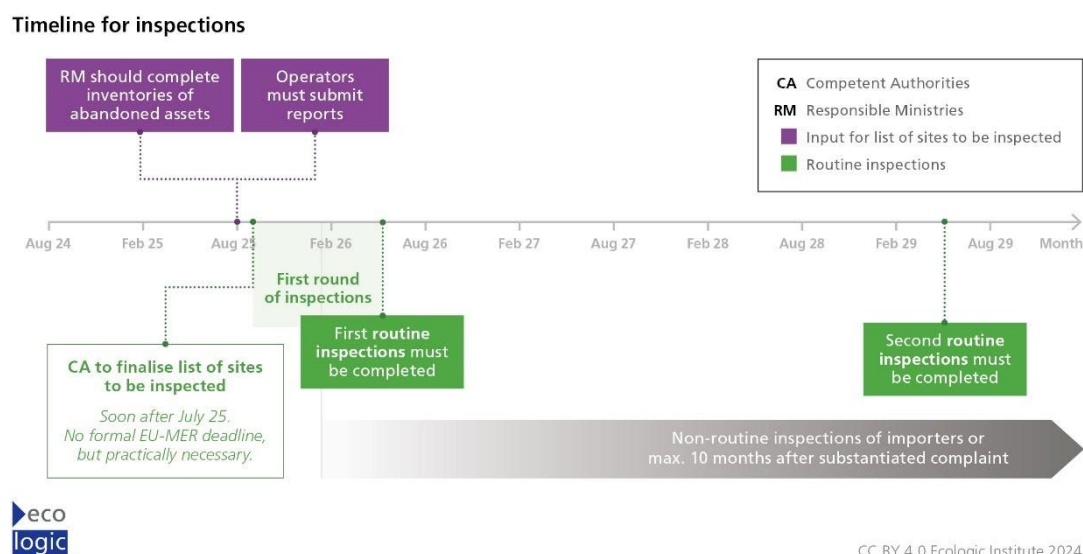
The CA must prepare reports that describe how the inspections have been carried out, present their findings and set out recommendations for further action to be taken by operators and undertakings subject to EU-MER obligations [Art 6(5)]. If the inspection reveals a non-compliance, the CA may set a deadline by which the operators and undertakings must take action to comply [Art 6(6)].

According to Art 6(2), the inspections can be undertaken “by or on behalf” of the CA. According to Art 6(7), to provide specialised expertise to support the CA when carrying out inspections, the MS “may enter into formal agreements with relevant institutions, bodies, agencies or services of the Union or with other Member States or other appropriate intergovernmental organisations or public bodies”, provided that their objectivity may not be compromised by a conflict of interest [Art 6(7)].

Timeline

Figure 5 presents the most important milestones related to routine and non-routine inspections of active and disused sites as well as importers of oil, gas and coal under the EU-MER. Further details are provided in the preceding text.

Figure 5: Inspection timeline for active and disused sites



The timeline shows a high workload during the first 21 months of implementation, from August 2024 to May 2026, and a significantly lower workload afterwards.

Implementing steps

The inspection process involves three main steps under responsibility of the CA:

- 1) Compiling a list of all sites, operators and undertakings subject to inspections
- 2) Setting up programmes for routine inspections and capacity for non-routine inspections
- 3) Carrying out the inspections

First step: the list of sites, operators and undertakings subject to inspection will include three elements: all active assets subject to EU-MER obligations; importers established in Romania; disused extraction sites documented in the inventories discussed above.

While the EU-MER sets no formal deadline for completing this list, it should be finalised as soon as possible to allow effective planning of the first round of routine inspections, which must be completed by 5 May 2026.

Second step: the programmes for routine inspections should aim to inspect all sites by 5 May 2026, as required by the EU-MER, and follow the established timeline afterwards. Site prioritisation should be based on a risk assessment, requiring the CA to develop a methodology to

weigh the risk criteria outlined in the EU-MER. Potential criteria for assessing risks include site throughput (i.e., volume of fossil fuels produced or processed), historical CH₄ emission rates, proximity to residential or environmentally sensitive areas, infrastructure age and condition, records of past infringements, and potential human safety and health risks. Practical aspects must also be considered, including logistics, and the availability of in-house or external specialised staff and equipment.

To be effective, the inspection programmes should maintain a level of unpredictability for the inspected entities. Some non-routine inspections can also be prepared in advance, for instance in response to complaints or to monitor compliance with CA-imposed deadlines for implementing LDAR measures.

The CA must also establish protocols for conducting inspections based on objective criteria to safeguard the integrity of the process. These criteria may include risk profiles of site categories and operators, the consistency and plausibility of MRV reports, and elements of randomisation to reduce predictability. Planning should also include decisions on whether to involve external service providers.

Ideally, this second step should be completed by summer 2025 to allow sufficient time for the first round of routine inspections, which must be completed by 5 May 2026. However, if the full inspection programme is not yet finalised, routine inspections can and should begin as soon as the structure and procedures are established.

Third step: If inspections are carried out by in-house personnel, the CA must manage the entire process, including recruiting and training specialised staff, procuring or leasing necessary equipment, and handling logistics.

If inspection activities are partly or fully outsourced, the CA remains responsible for procuring and supervising external inspectors. Core tasks – such as issuing official inspection reports and any resulting administrative orders – cannot be outsourced, as they fall strictly within the CA's mandate.

Since EU-MER inspections may lead to tangible sanctions, their outcomes and procedures may be challenged in court. Therefore, all CA procedures must be legally robust, and the CA must be equipped to defend its actions and decisions.

Implementing inspections in Romania

To date, the Romanian government has not formally assigned inspection responsibilities under the EU-MER. However, two authorities with analogous responsibilities under other EU legislation, may be well-positioned to take on these roles:

1. The National Environmental Protection Agency (ANPM) under the control of the with the Ministry of Environment, Waters and Forests is responsible for enforcing domestic pollution prevention and control obligations under the EU Industrial Emissions Directive. It could manage the inspections of CH₄ emitting sites in Romania.
2. The Ministry of Finance's General Directorate of Fiscal Legislation and Customs and Accounting Regulations, which oversees regulations and compliance under the Carbon Border Adjustment Mechanism (CBAM Regulation 2023/956/EU), could be tasked with inspecting importers, with support from the Romanian Customs Authority.

Based on the analysis provided in this chapter, and drawing on the data on emission sites and operators that was presented earlier, Chapter 8 outlines a methodology for the Romanian government to assess the resources – staff, equipment, and funding - needed by the CA to fulfil its tasks, including inspections

6 Inventories & mitigation in disused extraction sites

Rationale and overall principles

The EU-MER provisions discussed in this chapter aim to reduce CH₄ emissions from fossil fuel extraction sites that are no longer in use. These sites can continue emitting methane for many decades after operations cease, imposing ongoing health, safety and environmental costs on local communities and the global climate – long after the extraction took place.

In an efficient and well-regulated economy, the costs of halting such emissions and remediating the damage inflicted should fall on the operators. For this reason, the EU-MER requires operators of active assets to minimise future harm by taking a range of actions that aim to systematically reduce methane emissions and embed long-term operational changes. For disused sites, it establishes two key principles:

- 1) CH₄ emissions from disused fossil fuel extraction sites must be stopped.
- 2) In general, the costs of monitoring and mitigation measures must be borne by the entities responsible for the sites. Where the Member State cannot identify responsible parties, or where those parties lack sufficient financial means, the liability falls to the Member State.

The scale of effort required will vary significantly across Member States. Generally, the burden will be higher in countries with a long history of fossil fuel extraction and where previous post-operational mitigation was inadequate or insufficient. These Member States have historically benefited from fossil fuel production, and it is reasonable that they now assume greater responsibility for clean-up.

Importantly, this is a one-off effort, with limited costs over a limited period. Delaying implementation would only extend CH₄ emissions without reducing the eventual cost of action.

Areas of application and definition of responsibilities

The provisions discussed in this chapter apply to:

- “Inactive wells, temporarily plugged wells, permanently plugged and abandoned (oil and gas) wells” (IPAW) (Art. 18).
- Closed and abandoned underground coal mines (CUCM and AUCM) where coal production ceased after 3 August 1954 (Art. 24-25).

Active surface and underground coal mines are covered by different provisions (Article 19-20) not discussed in this chapter, which is dedicated to inactive, closed and abandoned assets (in short here “disused assets”). For all these assets, the EU-MER prescribes systematic CH₄ measurements, the development of mitigation plans, and the implementation of mitigation measures. In principle, the responsibility for all these actions lies with the entities operating or owning the sites.

However, with reference to the IPAW, Art 18(8) stipulates that “*where an operator, owner, licensee or a party otherwise responsible for the well under national law provides to the competent authority adequate and reliable evidence to demonstrate that it does not have the adequate financial means to fulfil those obligations or where the party responsible cannot be identified, the Member State shall bear responsibility for those obligations.*” The regulation remains silent on how a Member State should establish whether the responsible party has “adequate financial

means”, but it is very clear on the fact that the measurement and mitigation obligations always apply. The only difference is whether the costs are borne by the state or by private parties.

A similar principle applies to underground coal mines. However, in this case, the distinction lies in the relative definitions:

- Art 2(53) defines a ‘closed coal mine’ as *“a coal mine where coal production has ceased (...) and for which an operator, owner or licensee has still a valid permit, licence or other legal document conferring responsibility for the coal mine.”*

For closed coal mines, Art 25(7) assigns the responsibility for the compliance with the monitoring and reporting requirements to the *“mine operators or Member States”*. Unlike in the case of IPAW, the situation of an operator without adequate financial means is not explicitly mentioned. However, the wording *“or Member States”* implies that the same arrangement also applies to CUCM.

- Art 2(54) defines an ‘abandoned coal mine’ as *“coal mine where coal production has ceased but for which no operator, owner or licensee can be identified as being subject to the obligations (...) or that has not been closed in a regulated manner.”*

For abandoned coal mines, Art 25(7) assigns the responsibility for the compliance with the monitoring and reporting requirements to the Member States, unless an entity holds a permit for “alternative uses” of the AUCM. In this case, the responsibility lies with the permit holder.

Criteria the inventory must fulfil

By August 2025, the responsible ministry must set up inventories, make them publicly available and keep them up-to-date afterwards. The rules that apply to the IPAW differ slightly from those that apply to the CUCM and AUCM.

Concerning the IPAW, the responsible ministries must make *“all reasonable efforts³ to locate and document”* all such wells, *“based on a robust assessment taking into account the most up to date scientific findings and best available techniques”* [Art 18(1)]. The MS must report *“information on quantification of methane emissions and, where pressure monitoring equipment exists, information on pressure monitoring from all inactive wells, and temporarily plugged wells”* and submit them to their CA by 5 May 2026, and by 31 May every year thereafter [Art 18(3)]. Moreover, the IPAW inventories must include a comprehensive set of information, including the results of a quantification of CH₄ emissions to air and water, and may include supplementary information, as outlined in Annex V, Part 1(1).

With respect to permanently plugged and abandoned wells (e.g., not including the inactive and temporarily plugged wells), the inventories must also include the last known measurements or quantification of CH₄ emissions to air and to water, if any such measurements exist, as well as documentation demonstrating that there are no CH₄ emissions from that well or well site [Annex V, Part 1(3)].

If Romania notifies the Commission of the existence of 40,000 or more IPAW on its territory, it may adopt a plan for completing the inventory gradually. In this case, at least 20% of those wells must be included in the inventory by 5 August 2025, with priority being given to inactive wells and temporary plugged wells; at least 40% must be included by 5 August 2026, and an additional 15% every 12 months after 5 August 2026, with all wells to be included by 5 August 2030 [Art 18(2)].

³ For a discussion of the term “reasonable efforts” related to this article, see [Penalties and selected legal issues](#) (Piria, Sina, and Dück 2024), one of the reference studies cited in the introduction of this paper.

The CUCM and AUCM inventories must list “*all closed underground coal mines and abandoned underground coal mines in their territory or under their jurisdiction where operations ceased after 3 August 1954*” [Art 25(1)].

The CUCM and AUCM inventories must contain a series of information, including the results of source-level CH₄ measurements taken in all shafts that were actively used while the mine was operational, as well as unused vent pipes, and unused gas drainage wells. These measurements must be conducted in accordance with specified principles, one of which is a CH₄ measurement accuracy of at least 0,5t per year [Annex VIII, Part 1].

Information sources for the inventories in Romania

Coal mines

According to Romania’s latest Greenhouse Gas National Inventory Report, there are currently 173 inactive, abandoned underground coal mines in the country. Of these, 164 were closed after 1976, while 9 ceased activity between 1900 and 1976 (Ministry of Environment, Waters and Forests und National Environmental Protection Agency 2024). All or nearly all of these sites will need to be included in the EU-MER inventories.

The same source provides CH₄ emission quantifications for some inactive coal mines, including those administered by three state-owned enterprises: CNH Petroșani, S.N.L.O. Târgu Jiu, and S.N.C. Ploiești. The Mining Industry Strategy 2017–2035 also provides information on the location, operational status, and administrator of (inactive) coal mines, indicating that the authorities maintain a corresponding – though not publicly accessible – database (Ministry of Economy 2017). While not all information required for the inventory, especially CH₄ measurements, is likely available, key elements such as location, operational status, and administrator are probably already known to the Romanian state.

Oil and gas wells

No official data is available on the number of disused oil and gas wells in Romania. According to Lei (2022), the number of abandoned oil and gas wells could be as high as 60,000. This suggests that the more gradual inventory deadlines, as described above, are likely to apply. However, it also indicates that compiling a complete list of IPAW in Romania will require substantial effort.

Fragmented information on inactive oil and gas wells is available from independent studies and sources. GEM (2024b) provides an interactive map showing that oil and gas wells with a closed, abandoned, or unknown status are distributed across 41 geographical areas. While the precise number and location of wells in these areas are not specified, studies such as Baciul, Ghiorghiul, and Hmoudahl (2023) or Pene, Octavian, and Bogdan (2006) may help narrow down estimates, particularly in regions like Transylvanian Basin and the Moesian Platform.

These sources also lack key data on CH₄ emissions and pressure monitoring. As a result, extensive additional inspections, measurements, and assessments will almost certainly be necessary to meet inventory requirements.

Identifying the entities responsible for mitigation and reporting

All disused fossil energy extraction sites that must be inventoried as described above are also subject to monitoring, reporting and verification (MRV), as well as to mitigation obligations. The responsible ministry’s related responsibility and tasks can be of two types:

- If the responsible ministry can identify an operator, owner, licensee or another responsible party (RP) with “*the adequate financial means to fulfil those obligations*” [Art 18(8)], the responsibility of the RM is limited to ensuring that the RP fulfils the obligations described in this section.
- If the responsible ministry cannot identify a RP, or where the latter has no adequate financial means, the MS itself, via its responsible ministry, is responsible for fulfilling the following obligations [Art 18(8), 25(2), 25(4)].

Therefore, in each Member State, it is in the public interest that the responsible ministries identify accountable parties for as many disused sites as possible. However, this may prove difficult, especially for sites where operations ceased a long time ago. The earlier and the more thoroughly this search is conducted, the lower the risk that the state assumes liabilities that should fall to private actors. Failure to do so could negatively affect not only public finances but also public support for CH₄ mitigation policies.

Compared to other Member States, identifying the entities responsible for reporting, mitigation plans and measures in Romania should be comparatively straightforward. As outlined above in Chapter 4, the Romanian state owns all oil, gas, and coal resources within its territory and has the authority to grant or revoke the respective licences for their exploitation. Concessions and licences are awarded by the National Agency for Mineral Resources of Romania (NAMR), which, in accordance with NAMR Order 175/2009, also regulates and supervises the conditions under which oil, gas, and coal sites may transition to an abandoned state, following assessment and reporting by independent experts (Volciuc-Ionescu 2017).

Provided that NAMR has kept comprehensive records of the disused sites, identifying the responsible companies should pose no major difficulty. However, given the very large number of sites involved, the administrative workload might still be substantial. Postponing this task or approaching it half-heartedly would inevitably lead to significantly higher costs later, as the MS could become liable for reporting, mitigation plans, and measures for a larger number of disused extraction sites. Moreover, if the identification process is not conducted properly, the risk of litigation by companies identified as responsible parties increases.

To minimise both disputes and associated costs, the MS should carefully review and justify its decisions when assigning responsibilities. At the same time, an overly cautious approach would be counterproductive, as the Romanian state may ultimately bear liability in the absence of clear assignments – thus reducing the public funds available for other purposes.

In certain cases, the state will bear the liability for reporting and mitigation. This likely applies to inactive coal mines previously operated by CNH Petroșani, S.N.L.O. Târgu Jiu, and S.N.C. Ploiești. Additionally, same may be true for inactive coal mines held by Oltenia Energy Complex, in which the Romanian state holds a 77% stake y (Ministry of Energy 2022). Regarding inactive oil and gas wells, the Romanian state may be required to (partially) assume responsibility in the case of Romgaz and OMV Petrom, given its ownership stakes of 70% and 21%, respectively (Romgaz 2025; OMW Petrom 2023).

Detailed provisions on reporting, mitigation plans and mitigation measures

Concerning the IPAW, Art 18(2) requires that the reports with a quantification of CH₄ emissions “*shall be submitted to the competent authorities by 5 May 2026.*” Although this specific clause does not specify who is responsible for submitting those reports to the CA, the context makes it clear that the ultimate responsibility lies with the responsible ministries, either directly or through its duty to “*ensure that operators fulfil the obligations*” [Art 18(8)].

Furthermore, the responsible ministries are indirectly (via the RP) or directly responsible, among others, for taking *“all the necessary measures available to them for remediating, reclaiming and permanently plugging”* inactive wells where CH₄ emissions are detected, as long as this is *“technically feasible, and taking into account the environmental impacts of the necessary works in view of the associated reduction of the methane emissions”* [Art 18(6)].

Moreover, by August 2026, the MS or the RP must *“prepare a mitigation plan to remediate, reclaim and permanently plug inactive wells and temporarily plugged wells”* and implement it within 12 months of the reports mentioned above; in exceptional cases, within up to 36 months [Art 18(9)].

The mitigation plans must include *“the schedule of addressing each inactive well and temporarily plugged well, including the actions to be carried out”* as well as the *“projected end date of remediation, reclamation or plugging of inactive wells and temporarily plugged wells”* [Annex V, Part 2]. If the MS or the RP *“can demonstrate that the implementation of that mitigation plan is not possible within that deadline due to safety, administrative or technical considerations, they may delay”* the implementation by up to three years from the submission of the first report [18(9)].

Thus, all reports should be submitted by the RP or by the responsible ministry to the CA no later than May 2026. The implementation of mitigation measures must be completed by May 2029. Failure to meet these deadlines may result in infringement procedures initiated by the European Commission.

As for the AUCM and CUCM, the obligations include the measurement of CH₄ emissions on all elements which were found to emit > 0,5t CH₄/yr based on the inventory discussed above, with some exemptions [Art 25(2-4)]. By August 2026 and every year afterwards, the responsible ministries or the mine operators must submit reports to the CA containing estimated yearly source-level CH₄ emissions data [Art 25(6)].

Moreover, the responsible ministry must develop and implement a mitigation plan to address CH₄ emissions from CUCM and AUCM. The mitigation plans must be submitted by the responsible ministry to the CA by February 2027 [Art 26(1)].

Timeline

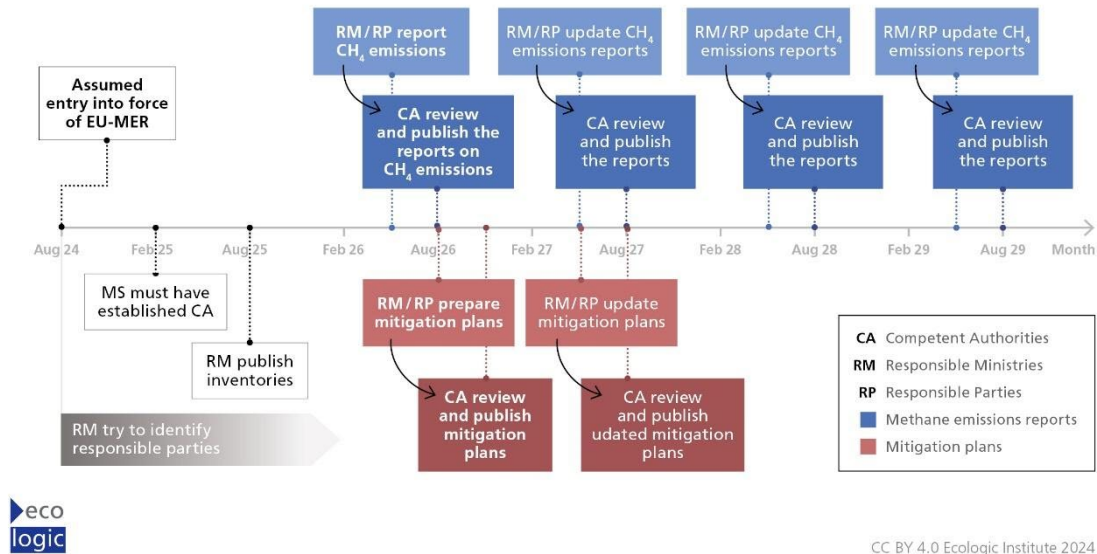
Figure 6 shows the key milestones related to the inventories, MRV requirements and mitigation plans and measures for inactive, closed and abandoned assets.

Most elements in this figure represent activities with clear deadlines. The only exception is the element at the bottom left, which indicates that responsible ministries will attempt to identify responsible parties. This task is not explicitly required by the EU-MER, which only states that the liability for the costs of mitigation measures lies with Member States if “responsible parties” – entities carrying this liability – cannot be identified.

In practice, it would be prudent to complete this identification process before preparing the mitigation plans, which are due by August 2026. Therefore, we recommend that the RMs aim to conclude this task, at least for the majority of sites, by the end of 2025.

Figure 6: Timeline for inventories and mitigation plans for closed and abandoned assets

Timeline for closed and abandoned assets



The recurring series of reports to be submitted by operators and undertakings subject to EU-MER obligations follow yearly cycles that extend beyond the timeframe shown in the chart. In other words, the red cycle continues into 2028 and beyond, and the blue cycle extends beyond 2029.

The CAs must review and publish these reports within three months of their submission by an operator or upon the completion of a mitigation plan by the responsible ministry [Art 18(10)].

7 Adequate powers and resources for the CAs

The Romanian government must “*designate one or more competent authorities responsible for monitoring and enforcing the application*” of the EU-MER. Romania should have notified the Commission of the CA’s name(s) and contact details by 5 February 2025 [Art 4(1)]. Unfortunately, this first EU-MER deadline has been missed and at the time of closing this paper (31 March), there has been no public news about the formal establishment of the CA.

Moreover, the Romanian government must “*ensure that the competent authorities (...) have adequate powers and resources to perform the tasks set out in this Regulation*” Art 4(3).

Building on the previous analysis, this chapter outlines the types of resources and powers required and provides an analysis of how to quantify the necessary resources.

Legal powers required by the competent authorities to fulfil their duties

Under Article 288(2) of the Treaty on the Functioning of the European Union, the EU-MER – like any other EU Regulation – is directly applicable in all EU Member States. It could therefore be argued that CAs are automatically empowered to carry out all actions necessary to fulfil their EU-MER tasks, even if some of these powers are not explicitly stated in the national act designating the CAs.

However, powers not explicitly granted to the CA by national legislation could be challenged in court – potentially by regulated entities seeking to hinder full implementation of the EU-MER. Even the risk of such challenges could delay implementation and reduce its effectiveness. This is likely why the EU-MER explicitly requires the MS to confer all necessary powers to their CAs. Clearly granting these powers enhances legal certainty and helps reduce the implementation costs.

Concerning inspections, the EU-MER requires that the Romanian CAs are granted the following powers:

- the authority to decide the scope and intensity of inspections based on a risk assessment;
- the right to access and inspect company premises with/without notification, including the power of flying drones over the inspected premises and other areas that must be crossed to reach them, as well as the right to make use of relevant satellite data;
- access to relevant records and documents, including commercially confidential operational data as far as it is needed to verify the completeness and plausibility of the reports provided by the operators and to verify compliance;
- the power to request and collect any additional information necessary for monitoring and enforcement, including interviewing company personnel;
- the power to publish the inspection reports;
- where an inspection shows non-compliance, the power to set deadlines for the operators and importers to implement all actions needed to bring their operations into compliance.

For tasks other than inspections, the EU-MER requires that the Romanian CAs are granted the following powers:

- the power to collect and process the data contained in the reports submitted by the operators, importers, responsible parties and Member States subject to reporting obligations according to the EU-MER. Where it requires publishing of reports, this encompasses the right to public disclosure;
- the power to initiate, lead and terminate administrative procedures, including hearings and other procedures permitted under administrative law;
- the power to issue warnings and notices;
- the power to impose remedial actions on operators and importers, (dis)approve and amend their leak detection and repair programmes, implementation schedules concerning venting and flaring, and other reports and proposals;
- the power to request additional evidence from operators and importers;
- the power to impose sanctions to address non-compliance;
- wherever the EU-MER provides leeway, the power to make use of it within the limits defined by the EU-MER and by other general principles of law, such as the principle of proportionality;
- the power to cooperate and share information with other authorities and other regulatory bodies at the national, EU and international level;
- the power to exempt certain operators from specific obligations, if the conditions defined in the EU-MER are fulfilled;
- the power to require from importers “sound” justification to explain their failure to achieve MRV-equivalence and to provide all due information.

Types of skills and resources needed

To implement the tasks arising from the EU-MER, Romania requires staff with a diverse range of skills. Although both the CA and the MS may opt to outsource certain activities, it remains essential that they maintain a core team of skilled experts to oversee and control the work performed by external service providers. Thus, the degree of outsourcing is a management and governance issue, but does not impact the kind of skills needed by the CA and MS.

The following skills and knowledge will be needed:

- **Industry Knowledge:** A solid understanding of sectors such as coal mining, oil and gas extraction, pipeline transport, gas storage, distribution, and LNG is essential for evaluating reports, conducting inspections, and making decisions (e.g., on mitigation plans and measures, sanctions, and complaints).
- **Technical Skills:** Proficiency in technical and statistical methods and technologies for measuring, quantifying, and mitigating CH₄ emissions, including statistical analysis and expertise on methane emissions distributions, is essential. The MS requires these skills to meet obligations for emissions reporting as well as implementing mitigation plans and measures for abandoned assets. The CA needs these skills to evaluate the plausibility, appropriateness, and completeness of MRV reports and mitigation plans, conduct inspections, support decision-making, and address complaints related to CH₄ measurement. Key competencies include operating CH₄ measurement technologies (e.g., drones, infrared gas imaging, as well as airplanes for MRV and LDAR), interpreting data from different observations (e.g., emission rates, pressure, and atmospheric CH₄ levels) and sources (e.g., satellites, drones).

- **Legal skills:** Legal expertise is essential because some activities and outputs may be prone to litigation. This means that inspection procedures must be robust enough to withstand legal challenges and that penalty decisions must be thoroughly prepared and defensible.
- **Economics Skills:** Economic expertise is vital when applying the principle of proportionality with reference to economic factors. For instance, according to Art 33(1), the penalties imposed by the CA must be “effective, proportionate, and dissuasive,” and fines must be set at a level that “at least deprives those responsible of the economic benefits derived from the infringement in an effective way” [Art 30(2)]. Although not explicitly mentioned in Art 18(9), the CA might also need to apply economic proportionality when requiring amendments to mitigation plans submitted by responsible parties or, in their absence, by the MS.
- **Other Skills:** Personnel of the MS and CA will also require skills in IT, logistics, management, administration, communication, and other areas to support routine EU-MER implementation activities.

Apart from the skills described above, the CA and RM will also require specialised equipment to conduct inspections and fulfil their obligations related to inventories, as well as to mitigation plans and measures for IPAW, AUCM, and CUCM. This includes:

- CH₄ detection devices (e.g., flame ionisation detectors, infrared gas detectors, and photoionisation detectors);
- CH₄ measurement instruments, including those capable of capturing emissions from individual sources and those suited for measuring emissions from entire sites;
- Mobile monitoring stations combining various sensors mounted on vehicles or mobile installations;
- Drones and airplanes equipped with detection and measurement tools.

To build and maintain the necessary administrative capacities, Romania will require adequate and sustained funding. This funding will not only need to cover the costs for the recruitment and training of qualified personnel within the CA and MS, but also the acquisition, operation, and maintenance of specialised equipment essential for fulfilling EU-MER obligations. At the same time, resources will be necessary for the development of supporting infrastructure such as IT systems, databases, communication tools, and office logistics. In cases where activities are outsourced, sufficient financial resources must also be available to procure high-quality services while ensuring robust oversight mechanisms. National budgets may need to be adjusted accordingly, and EU-level funding instruments like the Recovery and Resilience Facility could provide complementary support. Reliable funding is therefore a precondition for ensuring effective, consistent, and legally sound implementation of the EU-MER.

How to keep the implementation costs at bay

To fulfil its obligation to provide the CAs and the responsible ministry with the necessary resources to carry out their EU-MER duties, the Romanian government needs to estimate the scope of the tasks and specific resources required per unit of work. This section is to outline some key parameters needed for that estimation.

A substantial share of the EU-MER implementation costs is variable and largely influenced by factors beyond the control of the Member States. Notable examples include the number and complexity of sites to be inspected by the CAs, and the cost of mitigation measures for disused extraction sites for which the Romanian government clearly bears responsibility.

However, some cost factors can be influenced by the Romanian government. Three notable areas with a potential for cost reductions are:

- The Romanian state must avoid assuming liability for sites that should fall under the responsibility of private actors. Key measures include an early completion of the inventories, conducting thorough investigations to identify responsible parties, and having the capacity to resist unfounded litigation.
- For disused extraction sites legitimately under its responsibility, the Romanian state can seek to reduce mitigation costs by selecting the most cost-effective methods for reducing emissions. For example, in Romania, the large number of abandoned and inactive oil and gas wells suggests there may be opportunities to minimise costs by leveraging economies of scale and learning effects.
- The CA can reduce inspection costs through early and strategic planning. Efficient scheduling can optimise staff use, minimise travel costs, and improve resource allocation, whether inspections are done in-house or outsourced. Early tendering allows service providers to plan work smoothly, avoiding costly peaks. Similarly, if the inspections are carried out by in-house staff, early planning supports efficient recruitment, training, and equipment procurement.

These examples and the preceding analysis lead to two observations.

First, a significant portion of implementation costs will arise from one-off activities during the early phase. These activities include establishing inventories, identifying responsible parties for disused extraction sites, developing inspection procedures, recruiting and training in-house staff, as well as procuring equipment or, alternatively, contracting external service providers. Whether in-house or external, both the first round of routine inspections and the first few non-routine ones are likely to require more effort than later rounds, as procedures become more streamlined with experience. The same argument applies to the workstreams for monitoring and evaluating incoming reports and making decisions based on them.

Second, a higher upfront investment in the initial phase of the EU-MER implementation is likely to improve the efficiency in implementation, thereby reducing implementation costs in the medium and long term, while enhancing climate mitigation impact. A well-planned implementation can minimise the risk of the state unnecessarily bearing liabilities that could be assumed by private actors, improve the cost-efficiency of inspections, reduce legal costs associated with litigation, and help avoid infringement procedures.

How to quantify the resources needed to implement the EU-MER in Romania

Taking these observations into account, the Romanian government needs to quantify the tasks and the resources required by their responsible ministries and competent CAs to fulfil their EU-MER duties.

Summarising the data and analysis from Chapters 3-6, the resources needed for EU-MER implementation in Romania must be sufficient for the responsible ministry and CA to:

- Establish an inventory of around 50,000 disused oil and gas wells and circa 170 disused coal mines. This includes identifying the parties responsible for mandatory monitoring and mitigation measures in these sites, and enforcing these actions either through the identified third parties or directly when no responsible parties with sufficient financial means are identified.
- Finalise the list of sites to be inspected, set up inspection programmes (routine and non-routine), and carry out inspections. This includes the inactive sites mentioned, 12



operational oil fields, 20 operational and 9 developing gas fields, four operating coal mines, over 14,000 km of gas transmission pipelines supported by 8 gas compressor stations, and approximately 50,000 km of gas distribution pipelines.

- Enforce the effective implementation of the EU-MER by the CA, including evaluating a large number of incoming reports (see Annex 1 of this paper), making a large number of decisions, including about imposing sanctions when necessary (Annex 2) and reporting to the European Commission and to the general public about these activities (Annex 3).
- Moreover, cooperate with the CAs from other Member States and third countries, deal with substantiated complaints that may be lodged by any physical or legal entity, and carry out all other EU-MER implementation activities

Annex 1 - Incoming reports to be evaluated by the CA

This list completes the information provided in Chapter 7.

Emissions monitoring reports to be submitted to the CA

- Monitoring report with generic emission factors to be submitted by the operators of the oil and gas sectors assets by 5 August 2025 [Art 12(1)].
- Monitoring reports with the results of the measurement of the volume of methane releases per ventilation shaft and with yearly source-level emissions to be submitted by coal mine operators by 5 August 2025 and by 31 May every year thereafter [Art 20(1), Art 20(6)].
- Monitoring report with a quantification of source-level emissions to be submitted by the operators of the oil and gas sectors by 5 February 2026 for operated assets and 5 February 2027 for non-operated assets [Art 12(2)].
- Monitoring report with a quantification of source-level and measurement of site-level emissions to be submitted by the operators of the oil and gas sectors by 5 February 2027 and by 31 May every year thereafter for operated assets and 5 August 2028 and by 31 May every year thereafter for non-operated assets [Art 12(3)].
- Reports quantifying the emissions and information on pressure monitoring from all inactive & temporarily plugged oil and gas wells, to be submitted by the operators by 5 May 2026 and by 31 May every year thereafter. In MS with more than 40,000 IPAW, a relaxed schedule applies [Art 18(3)].
- Information on the standards, including international standards, or methodologies used for measurements and quantifications to be submitted by operators from the oil and gas sectors [Art 12(5)] and by coal mine operators [Art 20(4)] or the Member States, where the latter bear the responsibility for e.g. abandoned underground coal mines [Art 25(2), Art. 25(6)].
- Notifications on discrepancies to be submitted by the operators of the oil and gas sectors without delay after detection and before the end of the reporting period of a discrepancy between a quantification and a measurement [Art 12(6)].
- The results of the reconciliation process to be submitted by the operators of the oil and gas sectors that have the duty to carry out the reconciliation process as soon as possible after the detection of a discrepancy [Art 12(6)].
- Reports about hydrogeological conditions and the absence of material CH₄ emission to be submitted by those responsible for closed or abandoned coal mines (RP or RM) [Art 25(4)].
- Reports containing estimates of yearly source-level CH₄ emissions data to be submitted by those responsible for closed or abandoned coal mines (RP or RM) by 5 August 2026 and by 31 May every year thereafter [Art 25(6)].

LDAR to be submitted to the CA

- Leak detection and repair (LDAR) programmes to be submitted by oil & gas sectors operators by 5 August 2025 for existing sites, and within 6 months of the date of start

of operations for new sites. These reports must include sufficient information on the standards or methodologies used [Art 14(1)].

- Evidence justifying decision to delay repair to be submitted by the operators without any delay [Art 14(10)].
- Repair and monitoring schedules and reports summarising the results of all surveys to be submitted by the operators yearly [Art 14(14)].

Venting and flaring reports to be submitted to the CA

- The demonstration of the necessity to opt for flaring instead of either re-injection, on-site utilisation, storage for later use or dispatch of the methane to a market, to be submitted by the oil & gas sectors operators who opt to do so [Art 15(6)]
- Detailed implementation schedules with evidence of conditions justifying the exceptional delay of the actions concerning venting and flaring required by Article 15, to be submitted by the oil & gas sectors operators [Art 15(8)].
- Notification of venting and flaring events to be submitted by the operators without delay after the event and at the latest within 48 hours of the start of the event [Art 16(1)].
- Annual reports of all venting & flaring events, to be submitted by the oil and gas sector operators [Art 16(2)].
- Demonstration of the necessity to – in exceptional cases – opt for venting instead of flaring, to be submitted by the drainage station operators as soon as possible and at the latest within 48 hours of the operator becoming aware of the event, applicable from 1 January 2025 onwards [Art 22(1)].
- Notification of all venting events and of all flaring events with a destruction and removal design efficiency below 99%, to be submitted by the drainage station operators without delay after the event and at the latest within 48 hours from the start of the event or the moment the operator became aware of it [Art 23(1)]

Reports to CAs on mitigation plans

- Mitigation plans for emissions from closed and abandoned underground coal mines, to be submitted by the operators or by the Member States by 5 February 2027 [Art 26(1)].

Reports to CAs on imports

- Information set out in Annex VIII to be submitted by importers by 5 May 2025 and by 31 May every year thereafter or, alternatively, a justification why this information has not been provided [Art 27(1)].
- Report and demonstration that import supply contracts concluded or renewed after 4 August 2024 for the supply of crude oil natural gas or coal produced outside the EU do cover solely crude oil natural gas or coal with monitoring, reporting and verification (MRV-equivalence). To be submitted by importers from 1 January 2027 onwards [Art 28(1)].
- Information showing the results of the importers' reasonable efforts to require MRV-equivalence for the supplies covered by contracts concluded before the entry into force of the EU including a justification in case they fail to achieve MRV-equivalence. To be submitted by importers as of 1 January 2027 [Art 28(2)].



- Reports from producers and importers with supply contracts concluded or renewed after 4 August 2024 about the CH₄ intensity associated to the production of oil, gas and coal placed on the Union market. To be submitted by producers and importers by 5 August 2028 and every year thereafter [Art 29(1)].
- Reports from producers and importers with supply contracts concluded or renewed before 4 August 2024 about their reasonable efforts to get the data needed to report the CH₄ intensity associated to the production of oil, gas and coal placed on the Union market and the results of such efforts [Art 29(1)].

Annex 2 – Decisions to be taken by the CA

This list completes the information provided in Chapter 7.

Decisions concerning monitoring and reporting

- In case of notifications on statistically significant discrepancies between the source-level quantification and the site-level measurement of methane emissions by operators and undertakings subject to EU-MER obligations, or where the CA receives from them information on a reconciliation process concerning such discrepancies, the CA may request additional information or additional actions [Art 12(6)].
- The CA may exempt CUCM and AUCM operators from their monitoring duty where mines have been fully flooded for at least 10 years [Art 25(4)].

Decisions concerning LDAR

- The CA may require from the operators to amend their LDAR programme according to the requirements of the EU-MER [Art 14(1)].
- On request of the operators, CA must (dis)approve, and thus may prohibit alternative LDAR survey frequencies for components where no leaks were identified [Art 14(5)].
- The CA may require the operators to amend their repair and monitoring schedule in three specified cases [Art 14(9), Art 14(10), Art 14 (14)].
- The CA must (dis)approve, and thus may prohibit the possible decision of an operator decision to delay the repair of any leak [14(10)].
- The CA may recommend that surveys of the relevant components take place more frequently, if a higher risk to safety or a higher risk of methane losses is identified [14(12)].
- The CA may require the operators to amend their annual LDAR report summarising the results of all surveys completed during the previous year [Art 14(14)].

Decisions concerning venting and flaring

- The CA may require modifications of the implementation schedule for requirements concerning venting and flaring [Art 15(8)].
- The CA must (dis)approve, and thus may prohibit the usage of remote or automated monitoring systems as alternative to regular inspections concerning venting and flaring [Art 17(3)].

Decisions concerning sanctions and remedial actions

- If an inspection according to Art 6 identifies a serious breach of any requirements of the EU-MER, the CA must either issue to the inspected operator or importer notice of remedial actions (with clear deadlines for those actions) or instruct them to submit a set of remedial actions to address the breaches identified within one month from the conclusion of the inspection. In case of the latter, the CA must (dis)approve such set of remedial actions [Art 6(2)].
- The CA must impose penalties at least in the case of (list of 16 types of infringements), based on a list of obligatory indicative criteria for imposition of penalties according to [Art 33(3)], [Art 33(5)].

- If the legal system of a MS does not provide for administrative fines, the CA shall initiate a fining procedure [Art 33(3)].

Decisions concerning abandoned underground coal mines

- The CA must receive and, arguably⁴, (dis)approve the plans of measures to avoid methane emissions submitted by entities applying for a permit for an alternative use of abandoned underground coal mines [Art 26(3)].

Decisions concerning IPAW and offshore oil and gas

- The CA may exempt from the obligations under Art 14 offshore oil and gas components located in their territory at a water depth greater than 700 meters, if robust evidence can be provided that the impact on the climate of potential emissions from those components is highly likely to be negligible [Art 14(17)].
- The CA may exempt offshore oil & gas wells in depth greater than 200 metres, under different conditions for different depths [Art 18(11) and 18(12)].
- If the CA has evidence that an offshore inactive well or an IPAW emit longer than foreseen by Art 18(3), it must determine the application of certain obligations originally set out for temporarily plugged wells [Art 18(5)].
- The CA may ask the MS or RP to amend the mitigation plan concerning IPAW [Art 18(9)].

⁴ Art 26(3) EU-MER only states that the applicants “shall provide a detailed plan” showing that it will comply with the monitoring, reporting and mitigation obligations established by the EU-MER. The text does not specify the role of the CA. We assume that the permitting authority will require the CA’s approval of this plan.

Annex 3 – List of reports and publications to be produced by the CAs

This list completes the information provided in Chapter 7.

- Following each inspection, the CA shall prepare a report. Thereby, it may issue one report covering multiple inspections of components, assets or sites of the same operator or mine operator, provided such inspections are done in the same inspection period [Art 6(5)].
- Within two months after a carried-out inspection the CA must also publish the related report in accordance with Directive 2003/4/EC, which means that where relevant, the CA must indicate that information has been withheld according to Article 4 of the 2003/4/EC and explain why [Art 6(5) and Art 5(4)].
- The inspection related report must be notified to the concerned operator or importer and, where relevant, also to a complainant [Art 6(5)].
- After a (substantiated) complaint, the CA must keep the complainant informed of steps taken and inform them of appropriate alternative forms of redress such as the recourse to national courts [Art 7(4)].
- The CA must publish indicative periods to take a decision on complaints [Art 7(5)].
- The CA must publish all reports set out in Art 12 concerning the methane emission measurements and quantification within no longer than 3 months of their submission by operators and undertakings subject to EU-MER obligations [Art 12(8) and Art 5(4)].
- The CA must notify the EU Commission of derogations granted with regard to LDAR survey frequency [Art 14(5)].
- The CA must review and publish the IPAW reports and mitigation plans within 3 months of submission by operators or completion by MS [Art 18(10)].
- The CA must publish reports set out in Art 20 concerning the MRV duties related to operating coal mines within 3 months of submission by operators [Art 20(7) and Art 5(4)].
- CA must annually publish and notify the EU of any received information about venting/flaring events [Art 23(2) and Art 5(4)].
- CA must publish the report accompanying an exemption request from the RP for CUCM and AUCM [Art 25(4)].
- In general, CA must make reports concerning monitoring of CUCM & AUCM available to the public and the European Commission within 3 months from submission by operators [Art 25(8)].

References

- ACER. 2025. „List of LNG Facilities, Remit Portal of ACER“. Ljubljana, Slovenia: Agency for the Cooperation of Energy Regulators. <https://www.acer-remit.eu/portal/facilities>.
- Actmedia. n. d. „Romania has tens of thousands of abandoned oil and gas wells and we don't know how much methane they emit“. Zugegriffen 10. Februar 2025. <https://actmedia.eu/energy-and-environment/study-romania-has-tens-of-thousands-of-abandoned-oil-and-gas-wells-and-we-don-t-know-how-much-methane-they-emit/104044>.
- ANRE. 2025. „Raport Privind Rezultatele Monitorizarii Pietei de Gaze Naturale in Luna Ianuarie 2025“. Bucharest, Romania: Autoritatea Națională de Reglementare în Domeniul Energiei. <https://anre.ro/wp-content/uploads/2025/04/Raport-monitorizare-piata-gaze-naturale-luna-ianuarie-2025.pdf>.
- Assan, Sabina. 2024. „Romania Risks Penalties for Methane-Intensive Hard Coal Production“. London, UK: Ember. <https://ember-energy.org/latest-insights/romania-risks-penalties-for-methane-intensive-hard-coal-production>.
- Baciul, Calin, Eduard Ghiorghe, und Mustafa Hmoudahl. 2023. „Methane release from inactive oil and gas wells in Romania - preliminary results“. Berlin, Germany: Deutsche Geologische Gesellschaft - Geologische Vereinigung. <https://www.dggv.de/e-publikationen/methane-release-from-inactive-oil-and-gas-wells-in-romania-preliminary-results/>.
- Balkan Green Energy News. 2023. „Romania Plans to Expand Coal Mine over 100 Hectares of Forests“. <https://balkangreenenergynews.com/romania-plans-to-expand-coal-mine-over-100-hectares-of-forests/>.
- Bund der Energieverbraucher. 2004. „E.ON in Rumänien“. Bonn, Germany. https://www.energieverbraucher.de/de/e-on-ruhrgas_1325/NewsDetail_3581/.
- Distrigaz Sud Rețele. 2025. „Distrigaz Sud Rețele, Lider în distribuția de gaze naturale“. Bucharest, Romania. <https://www.distrigazsud-retele.ro/>.
- EEA. 2022. „Methane Emissions in the EU: The Key to Immediate Action on Climate Change“. Briefing. European Environment Agency. <https://www.eea.europa.eu/publications/methane-emissions-in-the-eu/methane-emissions-in-the-eu>.
- . 2025. „Methane, Climate Change and Air Quality in Europe: Exploring the Connections“. Copenhagen, Denmark. <https://www.eea.europa.eu/en/analysis/publications/methane-climate-change-and-air-quality-in-europe-exploring-the-connections>.
- Energyworld. 2024. „Black Sea LNG Terminal. The Project Costs Almost 900 Million Euros and Appears in the Revised Form of PNIESC“. Bucharest, Romania. <https://energyworld.ro/2024/09/23/romania-black-sea-lng-terminal-the-project-costs-almost-900-million-euros-and-appears-in-the-revised-form-of-pniesc/>.
- E.ON Romania. 2024. „Sustainability Report 2023“. <https://delgaz.ro/getattachment/5278dfad-fe87-4262-a766-c5070a1d2f67/Raport-E-ON-Romania-2023-electronic-EN.pdf>.
- EP. 2024. „Minutes - Results of Roll-Call Votes, 22. Methane Emissions Reduction in the Energy Sector“. Brussels, Belgium: European Parliament. https://www.europarl.europa.eu/doceo/document/PV-9-2024-04-10-RCV_EN.html.
- Euracoal. 2023. „Powering Transition in Europe: Romania“. Brussels, Belgium: European Association for Coal and Lignite. <https://euracoal.eu/info/country-profiles/romania-8/>.
- GEM. 2024a. „Black Sea LNG Terminal“. San Francisco, USA: Global Energy Monitor. https://www.gem.wiki/Black_Sea_LNG_Terminal.
- . 2024b. „Global Oil and Gas Extraction Tracker, Count of Gas and Oil Extraction Sites by Country/Area“. San Francisco, USA: Global Energy Monitor. <https://globalenergymonitor.org/projects/global-oil-gas-extraction-tracker/>.
- IEA. 2023a. „Energy System of Romania“. International Energy Agency. <https://www.iea.org/countries/romania/oil>.
- . 2023b. „The Imperative of Cutting Methane from Fossil Fuels“. Paris, France: International Energy Agency. <https://www.iea.org/reports/the-imperative-of-cutting-methane-from-fossil-fuels>.
- . 2024a. „Global Methane Tracker 2024“. International Energy Agency. <https://www.iea.org/reports/global-methane-tracker-2024>.
- . 2024b. „Key Findings – Global Methane Tracker 2024 – Analysis“. Paris, France: International Energy Agency. <https://www.iea.org/reports/global-methane-tracker-2024/key-findings>.
- illuminem. 2023. „Reassessing the EU's Approach to Methane Emissions“. Tuscany, Italy. <https://illuminem.com/illuminemvoices/reassessing-the-eus-approach-to-methane-emissions>.
- Lei, Tianyang. 2022. „Methane Emissions from Global Abandoned Oil and Gas Wells“. International Institute for Applied Systems Analysis.
- Ministry of Economy. 2017. „Strategie Miniera A Romaniei 2017-2035“. Bucharest, Romania: Ministerul Economiei.
- Ministry of Energy. 2022. „Complexul Energetic Oltenia SA“. Bucharest, Romania: Ministerul Energiei. <https://energie.gov.ro/companiile-din-subordine/complexul-energetic-oltenia-sa/>.

- Ministry of Environment, Waters and Forests und National Environmental Protection Agency. 2024. „Romania’s Greenhouse gas Inventory, 1989-2022. National Inventory Document“. Bucharest, Romania: UNFCCC. <https://unfccc.int/documents/644934>.
- OECD. 2024a. „Crude Petroleum in Romania“. Boston, USA: Observatory of Economic Complexity. <https://oec.world/en/profile/bilateral-product/crude-petroleum/reporter/rou>.
- . 2024b. „Petroleum Gas in Romania“. Boston, USA: Observatory of Economic Complexity. <https://oec.world/en/profile/bilateral-product/petroleum-gas/reporter/rou>.
- OECD. 2017. „Creating a Culture of Independence - Practical Guidance against Undue Influence“. Paris, France: Organisation for Economic Co-operation and Development. https://www.oecd.org/en/publications/creating-a-culture-of-independence_9789264274198-en.html.
- OMW Petrom. 2023. „Structura acționariatului OMW Petrom“. Bucharest, Romania. <https://www.omvpetrom.com/ro/investitori/actiuni-si-dividende/structura-actionariatului>.
- Pene, Constantin, Coltoi Octavian, und Mihai Bogdan. 2006. „Geological Conditions of the Oil and Gas Generation, Migration and Accumulation in the Moesian Platform (Romania)“. Bucharest, Romania: University of Bucharest, Faculty of Geology and Geophysics. https://www.researchgate.net/publication/249861739_Geological_Conditions_of_the_Oil_and_Gas_Generation_Migration_and_Accumulation_in_the_Moesian_Platform_Romania.
- Piria, Raffaele, und Leon Martini. 2024. „Governance at the National Level: Responsible Ministries and Competent Authorities“. Report. Ecologic Institute. <https://www.ecologic.eu/19719>.
- Piria, Raffaele, Dr Stephan Sina, und Lina-Marie Dück. 2024. „Penalties and Selected Legal Issues“. Report. Ecologic Institute. <https://www.ecologic.eu/19720>.
- Piria, Raffaele, Ramiro de la Vega, und Eike Karola Velten. 2024. „Tasks and Resources Needed at the National Level“. Report. Ecologic Institute. <https://www.ecologic.eu/19718>.
- Romanian Ministry of Energy. 2025. „Hotărâre pentru stabilirea unor măsuri de punere în aplicare a Regulamentului (UE) 2024/1787 al Parlamentului European și al Consiliului din 13 iunie 2024 privind reducerea emisiilor de metan în sectorul energetic și de modificare a a Regulamentului (UE) 2019/942“. Ministerul Energiei. <https://energie.gov.ro/hotarare-pentru-stabilirea-unor-masuri-de-punere-in-aplicare-a-regulamentului-ue-2024-1787-al-parlamentului-european-si-al-consiliului-din-13-iunie-2024-privind-reducerea-emisiilor-de-metan-in-secto/>.
- Romgaz. 2025. „Structura acționariatului Romgaz“. Mediaș, Romania. <https://www.romgaz.ro/structura-actionariatului>.
- Statista. 2024. „Romania: Volume of Imported Coal 2023, by Country“. Hamburg, Germany. <https://www.statista.com/statistics/1385298/romania-volume-of-imported-coal-by-country/>.
- Stavropoulou, Foteini, Katarina Vinković, Bert Kers, Marcel de Vries, Steven van Heuven, Piotr Korbeń, Martina Schmidt, u. a. 2023. „High Potential for CH₄ Emission Mitigation from Oil Infrastructure in One of EU’s Major Production Regions“. *Atmospheric Chemistry and Physics* 23 (18): 10399–412. <https://doi.org/10.5194/acp-23-10399-2023>.
- TRANSGAZ. 2021. „Domestic natural gas transmission“. Mediaș, Romania: Transgaz Magistrala Energiei. <https://www.transgaz.ro/en/activities/domestic-and-international-natural-gas-transmission/domestic-natural-gas-transmission>.
- UNEP. 2025. „Membership | The Oil & Gas Methane Partnership 2.0“. Nairobi, Kenya: United Nations Environment Programme. <https://www.ogmpartnership.org/our-member-companies>.
- Volciuc-Ionescu. 2017. „Oil and Gas in Romania“. Bucharest, Romania. <https://www.volciucionescu.com/oil/>.

Ecologic Institute
www.ecologic.eu

